



**GHANA STATISTICAL SERVICE (GSS)**  
*Statistics for Development and Progress*

Statistical Bulletin

**PRODUCER PRICE INDEX (PPI)**  
**March, 2015**

Ghana Statistical Service (GSS)

**Statistical Bulletin**

PRODUCER PRICE INDEX (PPI)

**MARCH, 2015**

**Date: April 29, 2015**

## Producer Price Index (PPI)

March 2015

### CONTENTS

HIGHLIGHTS FOR MARCH 2015	2
Table 1: Producer Price Index for March 2014 - March 2015	4
Table 2: Producer Price Index (Sep.2006=100) by sectors for March 2014 - March 2015	5
Table 3: Producer Price Index: Yearly Change Rates by Sector for March 2014 - March 2015(%)	6
Table 4: Producer Price Index: Monthly Change Rates by Sector for March 2014 - March 2015 (%)	7
Table 5: Mining And Quarrying: Producer Price Index (Sept 2006=100) March 2014 - March 2015	8
Table 6: Mining and Quarrying: Yearly Change Rates for March 2014 - March 2015(%)	9
Table 8: Manufacturing Producer Price Index (Sept 2006=100) for March 2014 - March 2015	11
Table 9: Manufacturing: Yearly Change Rates for March 2014 - March 2015 (%)	17
Table 10: Manufacturing: Monthly Change Rates for March 2014 - March 2015 (%)	23
Table 11: Utilities: Producer Price Index (Sept 2006=100) for March 2014 - March 2015	28
Table 12: Utilities: Yearly Change Rates for March 2014 - March 2015 (%)	29
Table 13: Utilities: Monthly Change Rates for March 2014 - March 2015 (%)	30

## HIGHLIGHTS FOR MARCH 2015

### **Producer Price Inflation Rate decreased to 19.1% in March 2015**

The Producer Price Index (PPI) measures the average change over time in the prices received by domestic producers for the production of their goods and services. The PPI for Ghana reports the producer price indices with reference to September 2006, the base period.

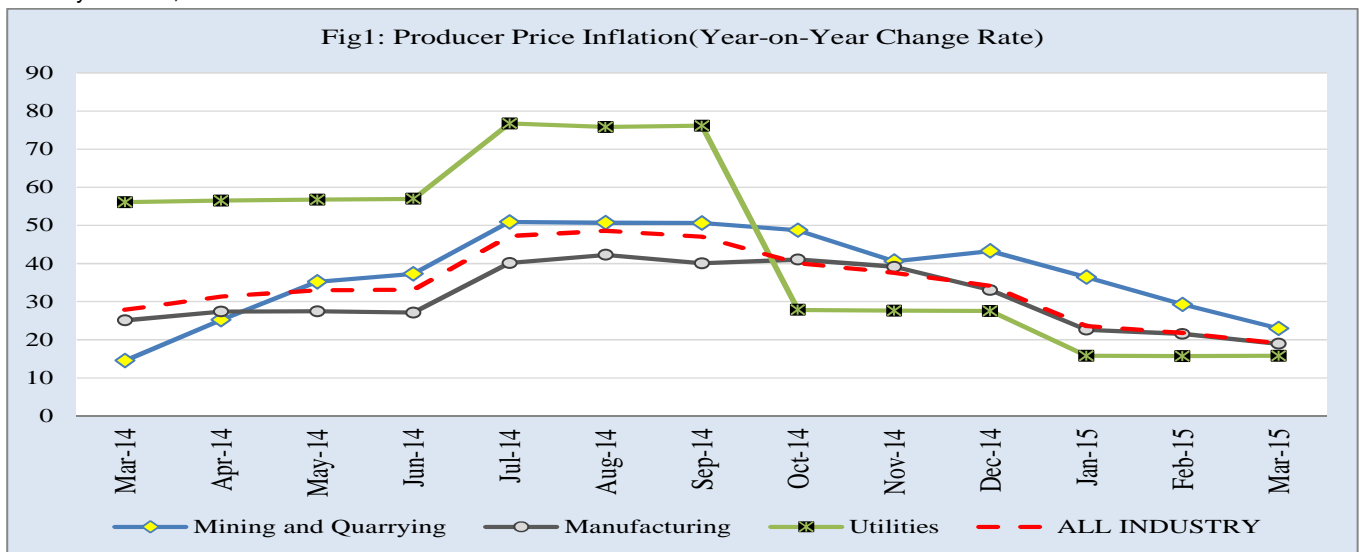
This release shows the producer price changes since September 2006, as well as the annual (year-on-year) and monthly inflation rates, for all industry and three major sub-sectors of industry (Mining and Quarrying, Manufacturing, and Utilities) for the last twelve months. The figures for the month of March 2015 are provisional, and are subject to revision when additional data become available. All other indicators are final.

The Producer Price Inflation rate for March 2015 was 19.1 percent. This rate indicates that, between March 2014 and March 2015 (year-on-year), the PPI increased by 19.1 percent, representing a 2.7 percentage point decrease in producer inflation relative to the rate recorded in February 2015 (21.8%). The month-on-month change in producer price index between February and March 2015 was 0.8 percent.

In March 2015, the producer price inflation in the Mining and Quarrying sub-sector decreased by 6.3 percentage points over the February 2015 rate of 29.3 percent, to record 23.0 percent in March 2015. Manufacturing, which constitutes more than two-thirds of total industry, also decreased by 2.5 percentage points to record 19.0 percent. The Utilities sub-sector recorded an inflation rate of 15.8 percent in March 2015, suggesting 0.1 percentage point increase over the February 2015 rate of 15.7 percent.

During the month of March 2015, ten out of the sixteen major groups in the manufacturing sub-sector recorded inflation rates higher than the sector average of 19.0 percent (Fig. 2). Manufacture of basic metals recorded the highest inflation rate of 57.3 percent while the manufacture of coke and refined petroleum products recorded the lowest producer price inflation rate of -8.7 percent.

**PPI** by Sectors; March 2014 to March 2015



**Manufacture of coke, refined petroleum products etc:** Annual rate was -0.5 percent for February 2015.

**Manufacture of other non-metallic mineral product:** Annual rate was 45.6 percent for February 2014, a

**Manufacture of motor vehicles, trailers and semi-trailers:** Annual rate was 9.4 percent in March 2015 ;

**Electricity and Water Supply:** Annual rate is 15.8 percent in March 2015; as compare to 15.7 percent in

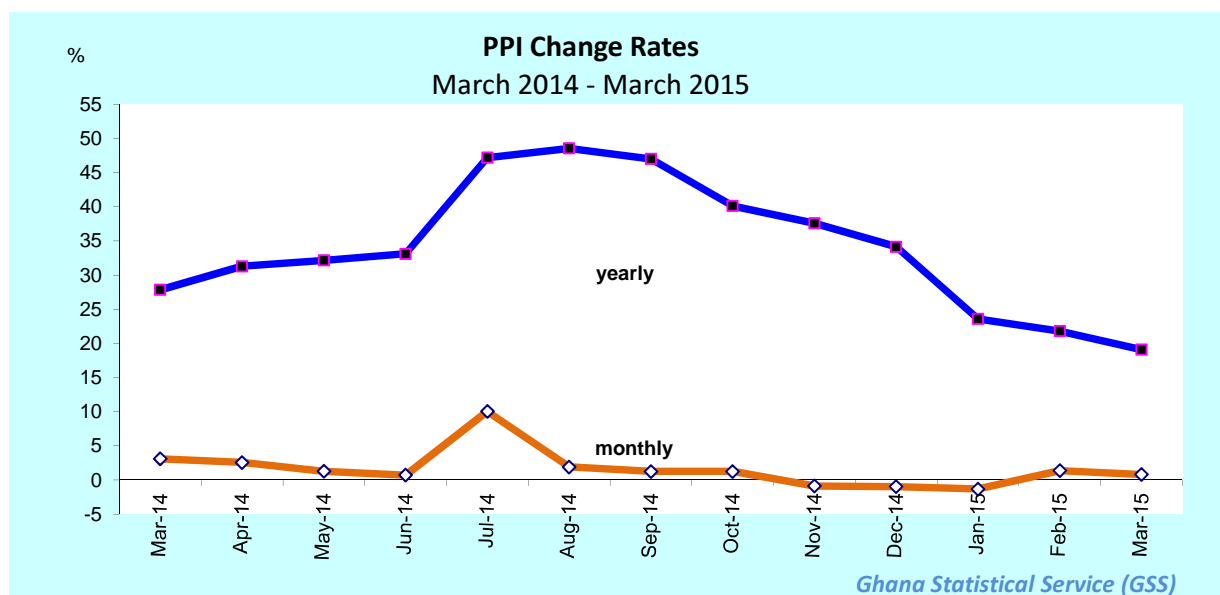
More detailed time series data is posted on the GSS website [[www.statsghana.gov.gh](http://www.statsghana.gov.gh)].

**The next release date is 27th May, 2015**

**Table 1: Producer Price Index for March 2014 - March 2015**

Year / Month	Index level	Monthly	Yearly
	Sept 2006=100	Change Rate (%)	
March-14	386.7	3.1	27.8
April-14	396.6	2.6	31.3
May-14	401.7	1.3	32.2
June-14	404.5	0.7	33.1
July-14	445.2	10.0	47.2
August-14	453.7	1.9	48.6
September-14	459.4	1.3	47.0
October-14	465.2	1.3	40.1
November-14	461.1	-0.9	37.6
December-14	456.6	-1.0	34.2
January-15	450.6	-1.3	23.6
February-15	456.8	1.4	21.8
March-15	460.5	0.8	19.1

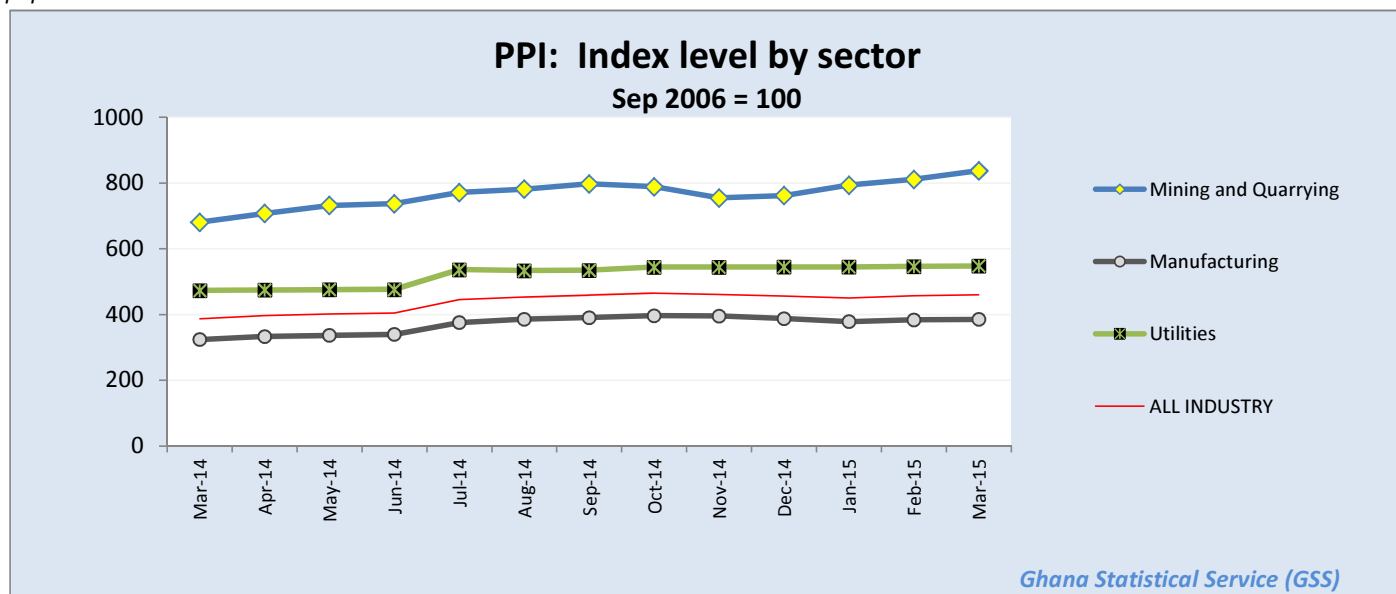
p: provisional



**Table 2: Producer Price Index (Sep.2006=100) by sectors for March 2014 - March 2015**

Year / Month	Mining and Quarrying	Manufacturing	Utilities	ALL INDUSTRY
<i>ISIC</i>	<i>C</i>	<i>D</i>	<i>E</i>	<i>C+D+E</i>
<i>weight</i>	13.97	69.75	16.28	100.00
March-2014	681.0	324.1	473.4	386.7
April-2014	707.8	333.2	474.8	396.6
May-2014	731.7	336.7	475.8	401.7
June-2014	737.1	339.6	476.5	404.5
July-2014	771.6	375.8	536.8	445.2
August-2014	781.4	385.8	534.1	453.7
September-2014	797.6	390.9	535.1	459.4
October-2014	788.8	396.8	544.6	465.2
November-2014	755.0	395.6	544.6	461.1
December-2014	762.1	387.7	545.0	456.6
January-2015	793.8	378.4	545.2	450.6
February-2015	811.3	384.0	546.3	456.8
March-2015	837.4	385.4	548.1	460.5

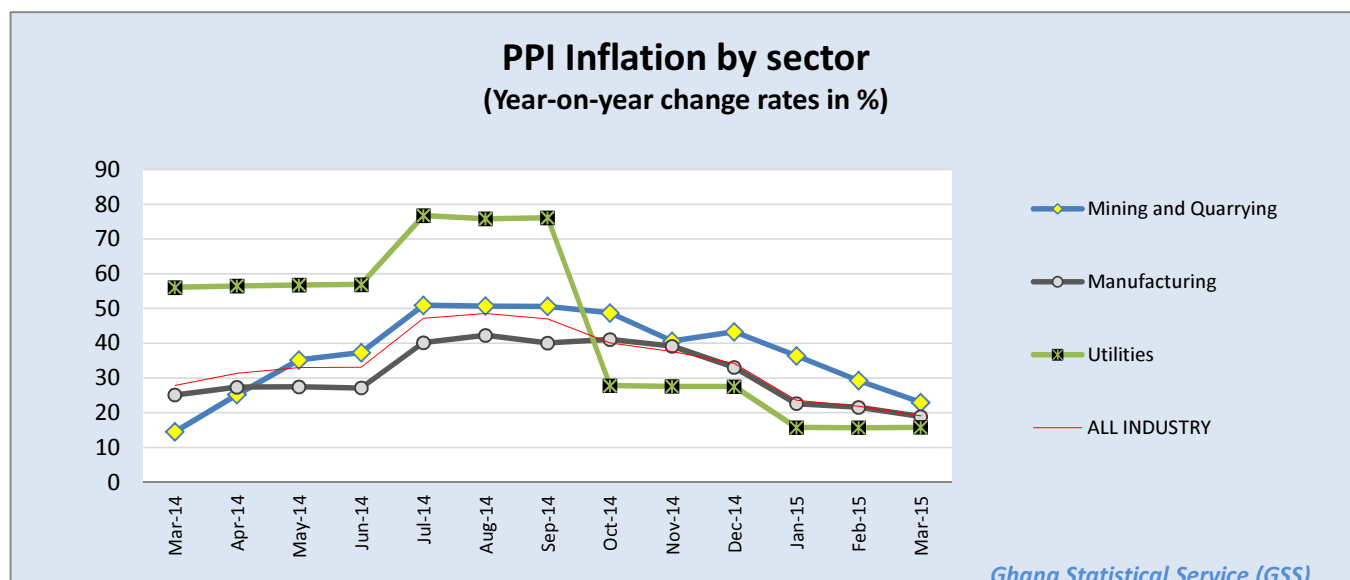
*p: provisional*



**Table 3: Producer Price Index: Yearly Change Rates by Sector for March 2014 - March 2015(%)**

Year / Month	Mining and Quarrying	Manufacturing	Utilities	ALL INDUSTRY
<i>ISIC</i>	<i>C</i>	<i>D</i>	<i>E</i>	<i>C+D+E</i>
<i>weight</i>	13.97	69.75	16.28	100.00
March-2014	14.5	25.1	56.1	27.8
April-2014	25.2	27.4	56.5	31.3
May-2014	35.2	27.5	56.8	33.0
June-2014	37.3	27.1	56.9	33.1
July-2014	50.9	40.2	76.8	47.2
August-2014	50.7	42.3	75.8	48.6
September-2014	50.6	40.1	76.1	47.0
October-2014	48.7	41.1	27.8	40.1
November-2014	40.6	39.2	27.6	37.6
December-2014	43.3	33.1	27.5	34.2
January-2015	36.4	22.6	15.8	23.6
February-2015	29.3	21.5	15.7	21.8
March-2015	23.0	18.9	15.8	19.1

*p: provisional*

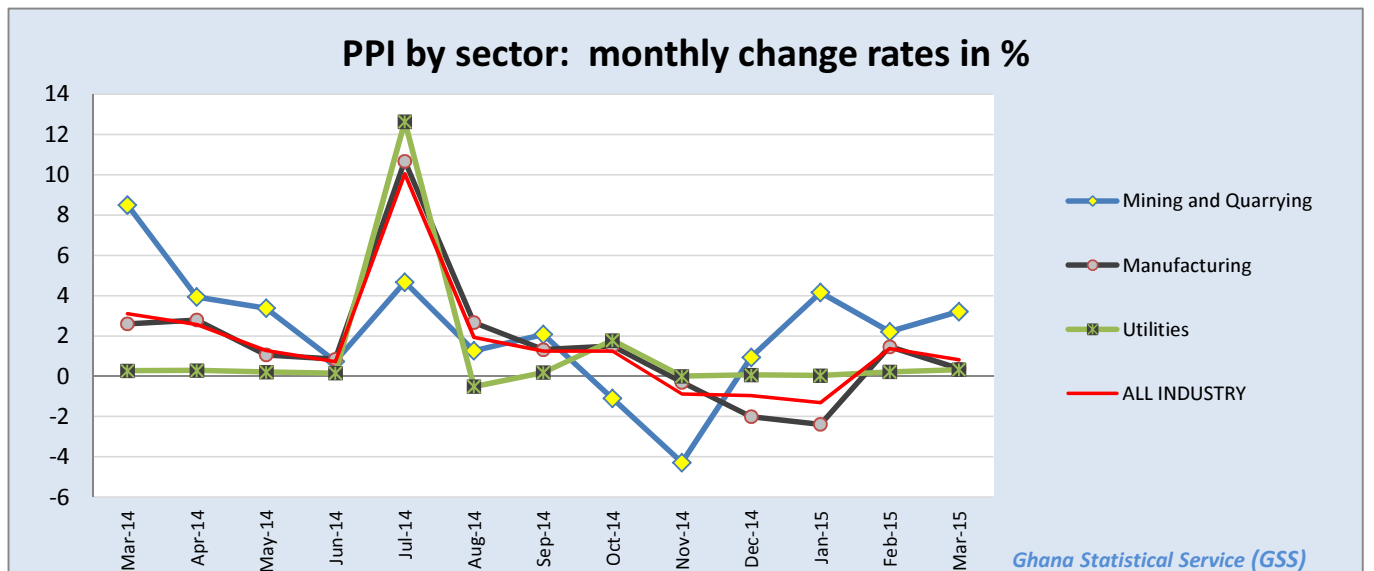




**Table 4: Producer Price Index: Monthly Change Rates by Sector for March 2014 - March 2015 (%)**

Year / Month	Mining and Quarrying	Manufacturing	Utilities	ALL INDUSTRY
<i>ISIC</i>	<i>C</i>	<i>D</i>	<i>E</i>	<i>C+D+E</i>
<i>weight</i>	13.97	69.75	16.28	100.00
March-2014	8.5	2.6	0.3	3.1
April-2014	3.9	2.8	0.3	2.6
May-2014	3.4	1.1	0.2	1.3
June-2014	0.7	0.8	0.2	0.7
July-2014	4.7	10.7	12.6	10.0
August-2014	1.3	2.7	-0.5	1.9
September-2014	2.1	1.3	0.2	1.3
October-2014	-1.1	1.5	1.8	1.3
November-2014	-4.3	-0.3	0.0	-0.9
December-2014	0.9	-2.0	0.1	-1.0
January-2015	4.2	-2.4	0.0	-1.3
February-2015	2.2	1.5	0.2	1.4
March-2015	p 3.2	p 0.4	p 0.3	p 0.8

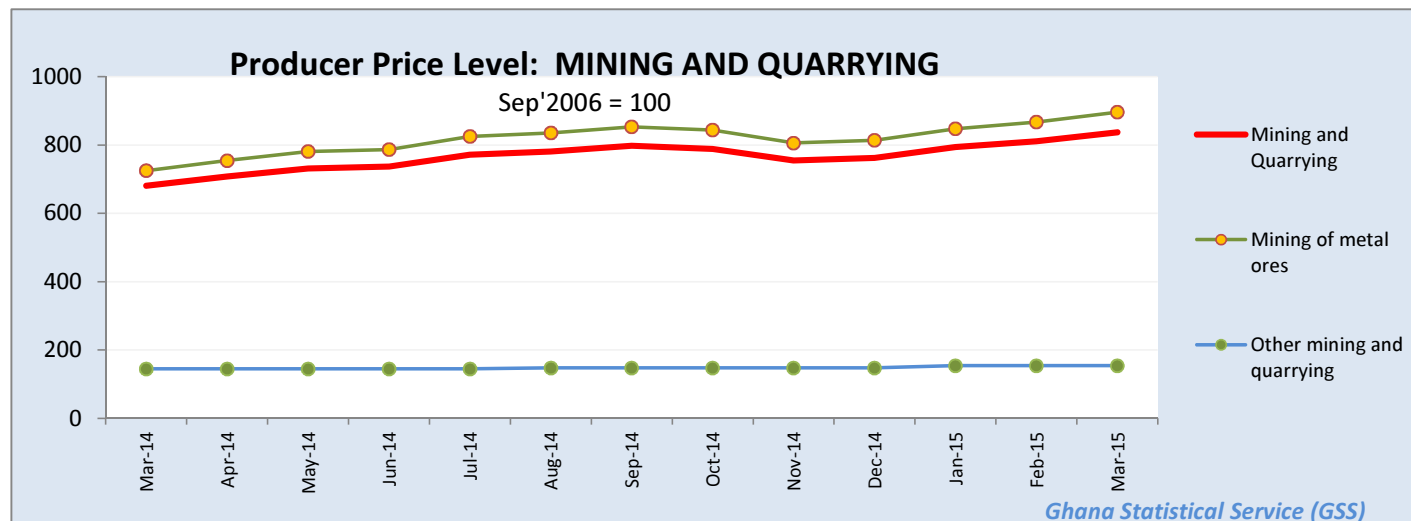
*p: provisional*



**Table 5: Mining And Quarrying: Producer Price Index (Sept 2006=100) March 2014 - March 2015**

Year / Month	Mining and Quarrying	Mining of metal ores	Mining of non-ferrous metal ores	Other mining and quarrying	Quarrying of stone, sand & clay	Mining and quarrying n.e.c.
ISIC	C	C13	C132	C14	C141	C142
weight	100.00	95.01	95.01	4.99	3.42	0.87
March-2014	681.0	724.8	724.8	144.6	140.6	161.8
April-2014	707.8	754.4	754.4	144.6	140.6	161.8
May-2014	731.7	781.0	781.0	144.6	140.6	161.8
June-2014	737.1	786.9	786.9	144.6	140.6	161.8
July-2014	771.6	825.2	825.2	144.6	140.6	161.8
August-2014	781.4	835.5	835.5	147.5	140.6	178.3
September-2014	797.6	853.5	853.5	147.5	140.6	178.3
October-2014	788.8	843.7	843.7	147.5	140.6	178.3
November-2014	755.0	806.2	806.2	147.5	140.6	178.3
December-2014	762.1	814.1	814.1	147.5	140.6	178.3
January-2015	793.8	847.8	847.8	154.0	148.3	178.3
February-2015	811.3	867.3	867.3	154.0	148.3	178.3
March-2015	p 837.4	p 896.3	p 896.3	p 154.0	p 148.3	p 178.3

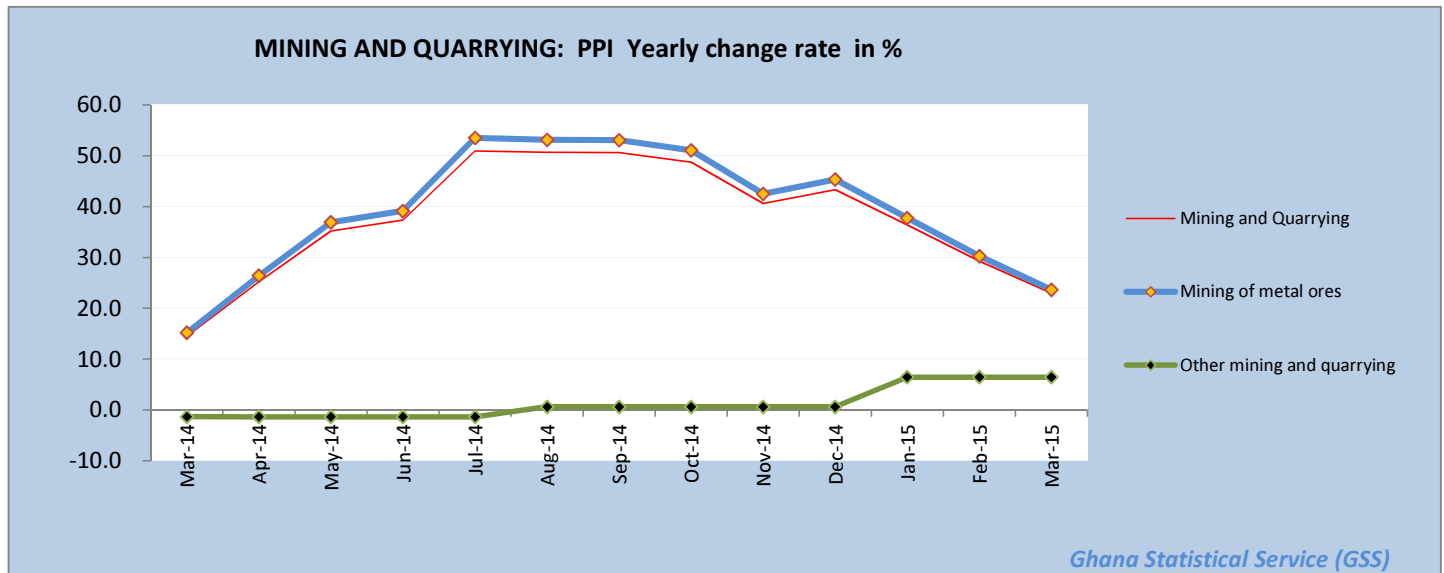
p: provisional



**Table 6: Mining and Quarrying: Yearly Change Rates for March 2014 - March 2015(%)**

Year / Month	Mining and Quarrying	Mining of metal ores	Mining of non-ferrous metal ores	Other mining and quarrying	Quarrying of stone, sand & clay	Mining and quarrying n.e.c.
ISIC	C	C13	C132	C14	C141	C142
weight	100.00	95.01	95.01	4.99	3.42	0.87
March-2014	14.5	15.2	15.2	-1.3	-1.6	0.0
April-2014	25.2	26.4	26.4	-1.4	-1.7	0.0
May-2014	35.2	36.9	36.9	-1.4	-1.7	0.0
June-2014	37.3	39.1	39.1	-1.4	-1.7	0.0
July-2014	50.9	53.5	53.5	-1.4	-1.7	0.0
August-2014	50.7	53.2	53.2	0.6	-1.7	10.2
September-2014	50.6	53.1	53.1	0.6	-1.7	10.2
October-2014	48.7	51.1	51.1	0.6	-1.7	10.2
November-2014	40.6	42.5	42.5	0.6	-1.7	10.2
December-2014	43.3	45.3	45.3	0.6	-1.7	10.2
January-2015	36.4	37.8	37.8	6.5	5.5	10.2
February-2015	29.3	30.3	30.3	6.5	5.5	10.2
March-2015	p 23.0	p 23.7	p 23.7	p 6.5	p 5.5	p 10.2

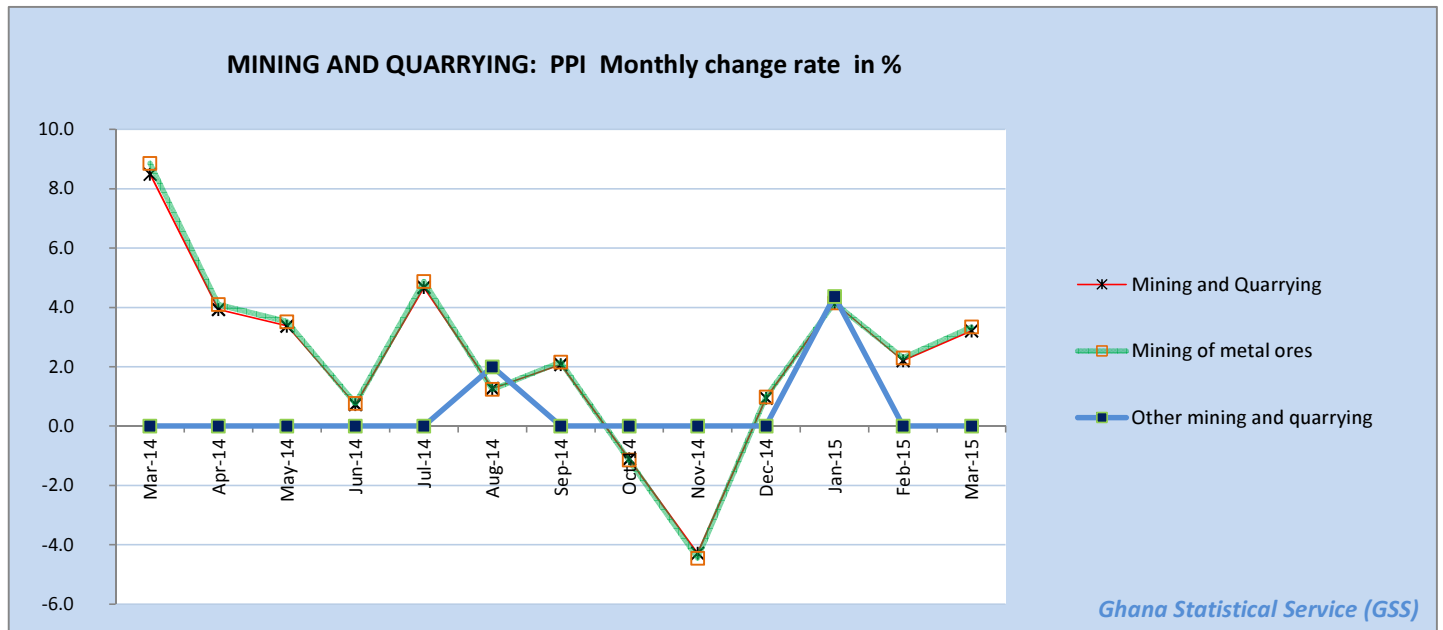
p: provisional



**Table 7: Mining and Quarrying: Monthly Change Rates for March 2014 - March 2015 (%)**

Year / Month	Mining and Quarrying	Mining of metal ores	Mining of non-ferrous metal ores	Other mining and quarrying	Quarrying of stone, sand & clay	Mining and quarrying n.e.c.
ISIC	C	C13	C132	C14	C141	C142
weight	100.00	95.01	95.01	4.99	3.42	0.87
March-2014	8.5	8.9	8.9	0.0	0.0	0.0
April-2014	3.9	4.1	4.1	0.0	0.0	0.0
May-2014	3.4	3.5	3.5	0.0	0.0	0.0
June-2014	0.7	0.8	0.8	0.0	0.0	0.0
July-2014	4.7	4.9	4.9	0.0	0.0	0.0
August-2014	1.3	1.2	1.2	2.0	0.0	10.2
September-2014	2.1	2.2	2.2	0.0	0.0	0.0
October-2014	-1.1	-1.1	-1.1	0.0	0.0	0.0
November-2014	-4.3	-4.5	-4.5	0.0	0.0	0.0
December-2014	0.9	1.0	1.0	0.0	0.0	0.0
January-2015	4.2	4.1	4.1	4.4	5.5	0.0
February-2015	2.2	2.3	2.3	0.0	0.0	0.0
March-2015	p 3.2	p 3.3	p 3.3	p 0.0	p 0.0	p 0.0

*p: provisional*



**Table 8: Manufacturing Producer Price Index (Sept 2006=100) for March 2014 - March 2015**

Year / Month	<b>Manufacturing</b>	<b>Manufacture of food products and beverages</b>	Production, processing, preservation of meat, fish, fruit, vegetables, oils and fats	Manufacture of dairy products	Manufacture of grain mill products, starch products, and prepared animal feeds	Manufacture of other food products	Manufacture of beverages	<b>Manufacture of textiles</b>	Spinning, weaving and finishing of textiles
<i>ISIC</i>	<b>D</b>	<b>D15</b>	<i>D151</i>	<i>D152</i>	<i>D153</i>	<i>D154</i>	<i>D155</i>	<b>D17</b>	<i>D171</i>
<i>weight</i>	<b>100</b>	<b>25.64</b>	4.60	4.31	4.66	4.80	7.27	<b>4.27</b>	4.28
March-2014	324.1	348.6	467.9	302.6	391.1	323.8	329.4	322.3	322.3
April-2014	333.2	352.5	492.9	302.6	391.1	333.5	329.4	322.3	322.3
May-2014	336.7	355.3	517.1	302.6	391.1	334.6	329.6	322.3	322.3
June-2014	339.6	357.5	527.2	302.6	391.1	344.7	329.6	323.6	323.6
July-2014	375.8	381.4	541.2	302.6	519.0	359.7	337.7	323.6	323.6
August-2014	385.8	381.8	556.4	302.6	519.0	257.9	382.8	359.9	359.9
September-2014	390.9	390.4	554.8	302.6	563.1	259.9	393.6	359.9	359.9
October-2014	396.8	402.3	534.0	354.0	563.1	250.9	393.6	359.9	359.9
November-2014	395.6	400.1	538.7	354.0	536.3	249.8	397.4	359.9	359.9
December-2014	387.7	406.1	561.6	354.0	530.8	249.8	403.1	434.4	434.4
January-2015	378.4	405.9	562.8	354.0	530.8	247.8	403.1	434.4	434.4
February-2015	384.0	422.8	563.8	354.0	520.7	368.2	403.1	434.4	434.4
March-2015	p 385.4	p 432.1	p 618.7	p 354.0	p 525.2	p 370.0	p 411.6	p 434.4	p 434.4

*p: provisional*

**Table 8: Manufacturing Producer Price Index (Sept 2006=100) for March 2014 - March 2015**

*contd.*

Year / Month	Tanning of leather; manu facture of luggage, etc	Manufacture of footwear	Manufacture of wood an of articles of straw etc.	Sawmilling and planing of wood	Manufacture of products of wood, cork, straw etc.	Manufacture of paper and paper products	Manufacture of paper and paper products	Publishing, printing and reproduction of rec. media	Publishing	Printing and service activities ...
ISIC	D19	D192	D20	D201	D202	D21	D210	D22	D221	D222
weight	0.12	0.12	9.03	4.94	4.10	0.62	0.62	1.14	0.40	0.74
March-2014	323.1	323.1	219.8	216.2	230.2	254.5	254.5	489.3	500.0	483.5
April-2014	313.3	313.3	210.9	205.1	228.1	254.5	254.5	489.8	500.0	484.4
May-2014	313.3	313.3	212.1	205.9	230.7	254.5	254.5	505.6	500.0	508.7
June-2014	371.3	371.3	213.0	205.9	234.4	276.5	276.5	512.4	500.0	519.3
July-2014	377.1	377.1	213.0	205.9	234.4	285.7	285.7	528.1	500.0	544.1
August-2014	377.1	377.1	213.0	205.9	234.6	285.7	285.7	528.1	500.0	544.1
September-2014	378.7	378.7	213.6	205.8	237.2	285.7	285.7	531.0	500.0	548.7
October-2014	377.4	377.4	226.2	221.8	237.6	285.7	285.7	531.0	500.0	548.7
November-2014	377.4	377.4	226.2	221.9	237.6	297.4	297.4	587.3	665.2	548.7
December-2014	368.0	368.0	226.2	221.9	237.6	304.7	304.7	585.4	665.2	544.5
January-2015	276.3	276.3	226.7	221.9	239.9	376.4	376.4	595.5	665.2	560.6
February-2015	279.8	279.8	226.5	221.9	239.0	376.4	376.4	597.5	665.2	563.6
March-2015	p 325.5	p 325.5	p 226.5	p 221.9	p 239.0	p 381.9	p 381.9	p 597.5	p 665.2	p 563.6

*p: provisional*

**Table 8: Manufacturing Producer Price Index (Sept 2006=100) for March 2014 - March 2015**

*contd.*

Year / Month	Manufacture of coke, refined petroleum products etc.	Manufacture of refined petroleum products	Manufacture of chemicals and chemical products	Manufacture of basic chemicals	Manufacture of other chemical products	Manufacture of man-made fibres	Manufacture of rubber and plastics products	Manufacture of rubber products	Manufacture of plastics products
ISIC	D23	D232	D24	D241	D242	D243	D25	D251	D252
weight	22.94	22.94	10.15	0.54	9.45	0.16	3.90	0.76	3.14
March-2014	393.7	393.7	246.8	330.9	249.1	109.6	267.6	250.7	271.6
April-2014	399.4	399.4	264.8	330.9	267.9	109.6	268.1	250.0	272.3
May-2014	401.2	401.2	266.0	330.9	269.2	109.6	262.2	252.2	264.5
June-2014	402.2	402.2	272.9	330.9	276.3	109.6	263.9	259.5	264.9
July-2014	499.9	499.9	272.9	333.8	276.3	109.6	285.6	263.9	290.8
August-2014	500.5	500.5	272.9	333.8	276.3	109.6	285.0	260.0	291.0
September-2014	505.9	505.9	272.9	333.8	276.3	109.6	306.6	254.6	319.8
October-2014	505.0	505.0	274.2	333.8	277.7	109.6	306.0	251.6	319.9
November-2014	497.1	497.1	275.0	413.8	277.7	109.6	302.4	236.1	319.9
December-2014	421.2	421.2	295.4	427.3	298.7	109.6	319.2	243.4	339.4
January-2015	366.7	366.7	293.8	427.3	297.1	109.6	343.5	245.3	369.0
February-2015	368.1	368.1	293.1	357.8	297.1	109.6	355.1	239.6	386.1
March-2015	p 359.6	p 359.6	p 293.1	p 357.8	p 297.1	p 109.6	p 371.0	p 242.5	p 406.1

*p: provisional*

**Table 8: Manufacturing Producer Price Index (Sept 2006=100) for March 2014 - March 2015**
*contd.*

Year / Month	Manufacture of other non-metallic min. products	Manufacture of non-metallic mineral products n.e.c.	Manufacture of basic metals	Manufacture of basic iron and steel	Manufacture of basic precious and non-ferrous metals	Manufacture of fabricated metal products, ...	Manufacture of structural metal products, tanks, reservoirs ...	Manufacture of other fabricated metal products ...	Manufacture of machinery ... n.e.c.	Manufacture of special-purpose machinery
ISIC	D26	D269	D27	D271	D272	D28	D281	D289	D29	D292
weight	8.20	8.20	5.02	2.02	2.65	3.70	1.55	2.15	0.42	0.42
March-2014	314.9	314.9	241.1	281.3	214.4	384.9	414.3	365.1	676.2	676.2
April-2014	345.9	345.9	262.9	289.8	244.1	395.8	414.5	382.8	676.2	676.2
May-2014	361.3	361.3	268.7	298.7	247.9	397.4	416.4	384.3	676.2	676.2
June-2014	363.0	363.0	270.4	298.7	250.7	398.6	416.4	386.3	676.2	676.2
July-2014	444.6	444.6	279.1	298.7	265.1	414.2	427.3	405.0	676.2	676.2
August-2014	482.6	482.6	349.3	444.7	290.7	415.0	429.6	404.8	676.2	676.2
September-2014	478.4	478.4	358.2	462.7	294.7	424.6	452.9	405.4	676.2	676.2
October-2014	457.5	457.5	358.5	462.8	295.2	501.2	460.8	532.5	676.2	676.2
November-2014	457.6	457.6	358.6	462.8	295.2	505.2	460.9	539.8	676.2	676.2
December-2014	462.5	462.5	371.3	462.9	313.9	507.3	465.0	539.8	676.2	676.2
January-2015	457.5	457.5	371.3	462.9	313.9	513.3	475.2	542.8	676.2	676.2
February-2015	457.7	457.7	373.5	464.2	316.6	513.3	475.1	543.0	676.2	676.2
March-2015	p 458.8	p 458.8	p 379.2	p 465.9	p 324.2	p 513.5	p 475.0	p 543.3	p 714.3	p 714.3

*p: provisional*



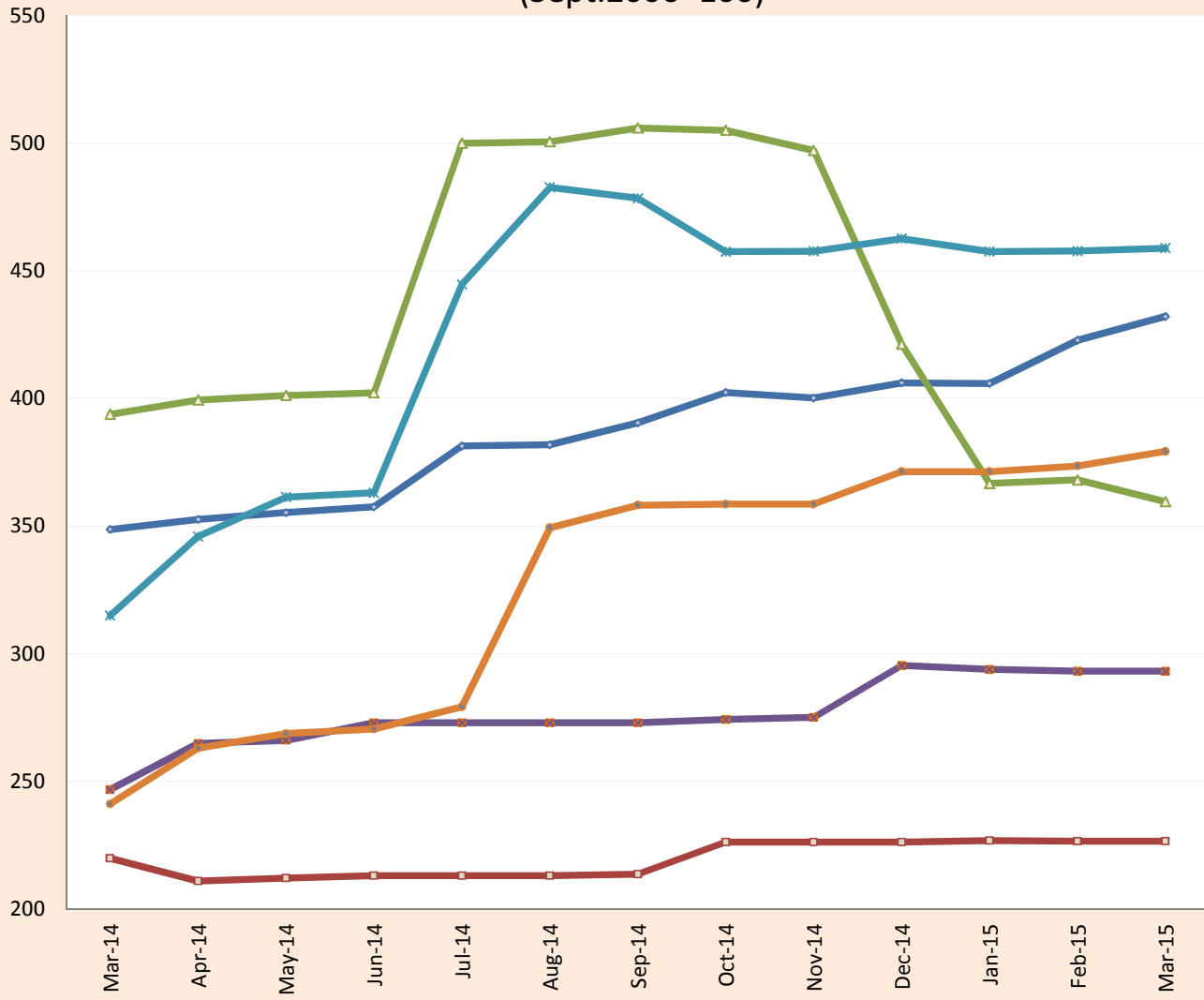
**Table 8: Manufacturing Producer Price Index (Sept 2006=100) for March 2014 - March 2015**

*contd.*

Year / Month	Manufacture of electrical machinery and apparatus n.e.c.	Manufacture of insulated wire and cable	Manufacture of motor vehicles, trailers and semi-trailers	Manufacture of bodies for motor vehicles, trailers and semi-trailers	Manufacture of furniture; manufacturing n.e.c.	Manufacture of furniture	Manufacturing n.e.c.
<i>ISIC</i>	<b>D31</b>	<i>D313</i>	<b>D34</b>	<i>D342</i>	<b>D36</b>	<i>D361</i>	<i>D369</i>
<i>weight</i>	<b>0.41</b>	<i>0.41</i>	<b>0.05</b>	<i>0.05</i>	<b>2.44</b>	<i>2.33</i>	<i>0.11</i>
March-2014	206.7	206.7	344.0	344.0	369.2	367.8	417.5
April-2014	206.7	206.7	344.0	344.0	372.6	371.3	417.5
May-2014	206.8	206.8	379.9	379.9	381.8	380.7	417.5
June-2014	206.8	206.8	387.6	387.6	400.1	398.2	466.8
July-2014	206.8	206.8	387.6	387.6	429.6	428.1	480.7
August-2014	206.9	206.9	394.2	394.2	449.6	448.6	480.7
September-2014	206.9	206.9	398.5	398.5	456.3	455.5	482.3
October-2014	206.9	206.9	391.9	391.9	456.6	455.7	485.4
November-2014	239.7	239.7	395.6	395.6	456.1	455.2	485.4
December-2014	239.7	239.7	387.7	387.7	457.0	456.1	485.4
January-2015	275.1	275.1	362.9	362.9	458.9	458.1	485.4
February-2015	275.3	275.3	369.0	369.0	475.0	474.7	485.4
March-2015	p 279.3	p 279.3	p 376.3	p 376.3	p 476.2	p 475.9	p 485.4

*p: provisional*

## PPI for Selected Subgroups in the Manufacturing Sector (Sept.2006=100)



- Manufacture of food products and beverages
- Manufacture of wood and articles of straw etc.
- ▲— Manufacture of coke, refined petroleum products etc.
- ◆— Manufacture of chemicals and chemical products
- ×— Manufacture of other non-metallic min. products
- Manufacture of basic metals

*Ghana Statistical Service (GSS)*

**Table 9: Manufacturing: Yearly Change Rates for March 2014 - March 2015 (%)**

Year / Month	<b>Manufacturing</b>	<b>Manufacture of food products and beverages</b>	Production, processing, preservation of meat, fish, fruit, vegetables, oils and fats	Manufacture of dairy products	Manufacture of grain mill products, starch products, and prepared animal feeds	Manufacture of other food products	Manufacture of beverages	<b>Manufacture of textiles</b>	Spinning, weaving and finishing of textiles
<i>ISIC</i>	<b>D</b>	<b>D15</b>	<i>D151</i>	<i>D152</i>	<i>D153</i>	<i>D154</i>	<i>D155</i>	<b>D17</b>	<i>D171</i>
<i>weight</i>	<b>100</b>	<b>25.64</b>	4.60	4.31	4.66	4.80	7.27	<b>4.27</b>	4.28
March-2014	25.1	22.1	59.9	22.2	16.7	30.7	4.9	6.5	6.5
April-2014	27.4	22.9	69.2	22.2	16.7	28.8	4.9	6.5	6.5
May-2014	27.5	23.3	76.1	22.2	16.7	25.0	4.9	6.5	6.5
June-2014	27.1	23.8	76.4	22.2	16.7	26.5	5.9	6.9	6.9
July-2014	40.2	32.0	79.8	22.2	54.8	33.2	8.3	6.9	6.9
August-2014	42.3	32.1	86.2	22.2	54.8	-5.5	22.8	18.9	18.9
September-2014	40.1	31.3	59.4	22.2	68.0	-9.0	26.2	14.6	14.6
October-2014	41.1	31.5	49.8	43.0	54.7	-12.3	21.3	14.6	14.6
November-2014	39.2	29.7	45.9	43.0	47.3	-15.0	22.5	14.6	14.6
December-2014	33.1	25.2	46.3	23.6	45.8	-16.3	24.2	38.6	38.6
January-2015	22.6	21.2	35.8	18.6	42.5	-16.9	22.4	34.8	34.8
February-2015	21.5	24.0	28.6	18.6	36.8	17.2	22.4	34.8	34.8
March-2015	p 18.9	p 23.9	p 32.2	p 17.0	p 34.3	p 14.2	p 24.9	p 34.8	p 34.8

*p: provisional*

**Table 9: Manufacturing Producer Price Index Yearly Change Rates for March 2014 - March 2015 (%)**

*contd.*

Year / Month	Tanning of leather; manufacture of luggage, etc	Manufacture of footwear	Manufacture of wood and of articles of straw etc.	Sawmilling and planing of wood	Manufacture of products of wood, cork, straw etc.	Manufacture of paper and paper products	Manufacture of paper and paper products	Publishing, printing and reproduction of rec. media	Publishing	Printing and service activities ...
<i>ISIC</i>	<b>D19</b>	<i>D192</i>	<b>D20</b>	<i>D201</i>	<i>D202</i>	<b>D21</b>	<i>D210</i>	<b>D22</b>	<i>D221</i>	<i>D222</i>
<i>weight</i>	<b>0.12</b>	<i>0.12</i>	<b>9.03</b>	<i>4.94</i>	<i>4.10</i>	<b>0.62</b>	<i>0.62</i>	<b>1.14</b>	<i>0.40</i>	<i>0.74</i>
March-2014	19.0	19.0	5.9	5.1	8.3	16.4	16.4	13.3	-1.9	22.5
April-2014	14.1	14.1	1.5	-0.4	7.3	13.5	13.5	13.4	-1.9	22.7
May-2014	14.6	14.6	2.1	0.4	7.1	13.5	13.5	17.1	-1.9	28.9
June-2014	33.5	33.5	2.3	0.4	8.0	14.7	14.7	18.7	-1.9	31.6
July-2014	35.6	35.6	2.2	0.4	7.7	18.5	18.5	21.2	-4.4	37.9
August-2014	35.6	35.6	2.2	0.4	7.6	18.5	18.5	21.2	-4.4	37.9
September-2014	32.7	32.7	2.4	0.3	8.6	21.8	21.8	19.2	-4.4	p 34.5
October-2014	32.2	32.2	8.4	8.2	8.4	21.7	21.7	11.1	0.0	p 17.6
November-2014	28.5	28.5	8.1	8.2	7.5	26.6	26.6	22.9	33.0	17.6
December-2014	21.7	21.7	7.2	8.2	3.9	29.7	29.7	22.5	33.0	16.7
January-2015	-14.5	-14.5	7.4	8.2	4.7	47.7	47.7	24.1	33.0	19.5
February-2015	-13.4	-13.4	7.2	8.2	4.0	47.9	47.9	22.1	33.0	16.6
March-2015	p 0.8	p 0.8	p 3.1	p 2.6	p 3.8	p 50.1	p 50.1	p 22.1	p 33.0	p 16.6

*p: provisional*

**Table 9: Manufacturing: Yearly Change Rates for March 2014 - March 2015 (%)**

*contd.*

Year / Month	Manufacture of coke, refined petroleum products etc.	Manufacture of refined petroleum products	Manufacture of chemicals and chemical products	Manufacture of basic chemicals	Manufacture of other chemical products	Manufacture of man-made fibres	Manufacture of rubber and plastic products	Manufacture of rubber products	Manufacture of plastics products
<i>ISIC</i>	<b>D23</b>	D232	<b>D24</b>	D241	D242	D243	<b>D25</b>	D251	D252
<i>weight</i>	<b>22.94</b>	22.94	<b>10.15</b>	0.54	9.45	0.16	<b>3.90</b>	0.76	3.14
March-2014	44.7	44.7	31.7	25.0	32.4	0.0	29.3	0.1	37.1
April-2014	47.2	47.2	35.2	25.0	36.0	0.0	24.3	0.0	30.6
May-2014	48.2	48.2	23.1	25.0	23.5	0.0	22.7	6.9	26.6
June-2014	42.7	42.7	26.3	25.0	26.8	0.0	22.7	10.1	25.8
July-2014	77.3	77.3	26.2	19.8	26.8	0.0	32.6	10.9	38.1
August-2014	68.6	68.6	26.2	21.4	26.8	0.0	33.4	14.2	38.2
September-2014	59.5	59.5	26.2	21.3	26.8	0.0	31.9	12.5	36.8
October-2014	63.7	63.7	23.5	21.2	24.0	0.0	29.8	8.5	35.2
November-2014	61.1	61.1	15.7	50.1	15.6	0.0	28.0	1.2	35.0
December-2014	30.9	30.9	24.3	54.8	24.3	0.0	34.6	2.9	43.1
January-2015	4.3	4.3	19.1	29.1	19.3	0.0	33.2	1.8	40.9
February-2015	-0.5	-0.5	18.8	8.1	19.3	0.0	36.8	-2.8	47.0
March-2015	-p 8.7	-p 8.7	p 18.8	p 8.1	p 19.3	p 0.0	p 38.6	-p 3.3	p 49.5

*p: provisional*

**Table 9: Manufacturing: Yearly Change Rates for March 2014 - March 2015 (%)**

*contd.*

Year / Month	Manufacture of other non-metallic min. products	Manufacture of non-metallic mineral products n.e.c.	Manufacture of basic metals	Manufacture of basic iron and steel	Manufacture of basic precious and non-ferrous metals	Manufacture of fabricated metal products, ...	Manufacture of structural metal products, tanks, reservoirs ...	Manufacture of other fabricated metal products ...	Manufacture of machinery ... n.e.c.	Manufacture of special-purpose machinery
<i>ISIC</i>	<b>D26</b>	<i>D269</i>	<b>D27</b>	<i>D271</i>	<i>D272</i>	<b>D28</b>	<i>D281</i>	<i>D289</i>	<b>D29</b>	<i>D292</i>
<i>weight</i>	<b>8.20</b>	8.20	<b>5.02</b>	2.02	2.65	<b>3.70</b>	1.55	2.15	<b>0.42</b>	0.42
March-2014	19.4	19.4	13.1	6.1	18.8	14.6	16.9	13.0	76.0	76.0
April-2014	29.7	29.7	23.2	9.3	34.9	16.1	14.6	17.2	76.0	76.0
May-2014	35.4	35.4	25.7	12.6	36.6	16.8	15.6	17.7	76.0	76.0
June-2014	36.0	36.0	26.1	12.6	37.6	17.0	15.8	18.0	76.0	76.0
July-2014	66.0	66.0	31.3	13.8	46.4	17.2	9.3	23.3	0.0	0.0
August-2014	81.7	81.7	62.4	65.1	60.4	17.4	9.9	23.1	0.0	0.0
September-2014	80.1	80.1	66.4	71.8	62.4	17.9	14.6	20.5	0.0	0.0
October-2014	70.8	70.8	66.0	71.6	61.8	36.3	16.0	53.1	0.0	0.0
November-2014	69.7	69.7	64.6	71.3	59.7	37.2	16.0	54.9	0.0	0.0
December-2014	71.5	71.5	69.6	71.1	68.4	36.7	17.1	52.7	0.0	0.0
January-2015	51.1	51.1	59.8	70.3	52.2	35.5	16.2	51.4	0.0	0.0
February-2015	45.6	45.6	56.9	65.5	50.6	34.6	16.2	49.6	0.0	0.0
March-2015	p 45.7	p 45.7	p 57.3	p 65.6	p 51.2	p 33.4	p 14.7	p 48.8	p 5.6	p 5.6

*p: provisional*

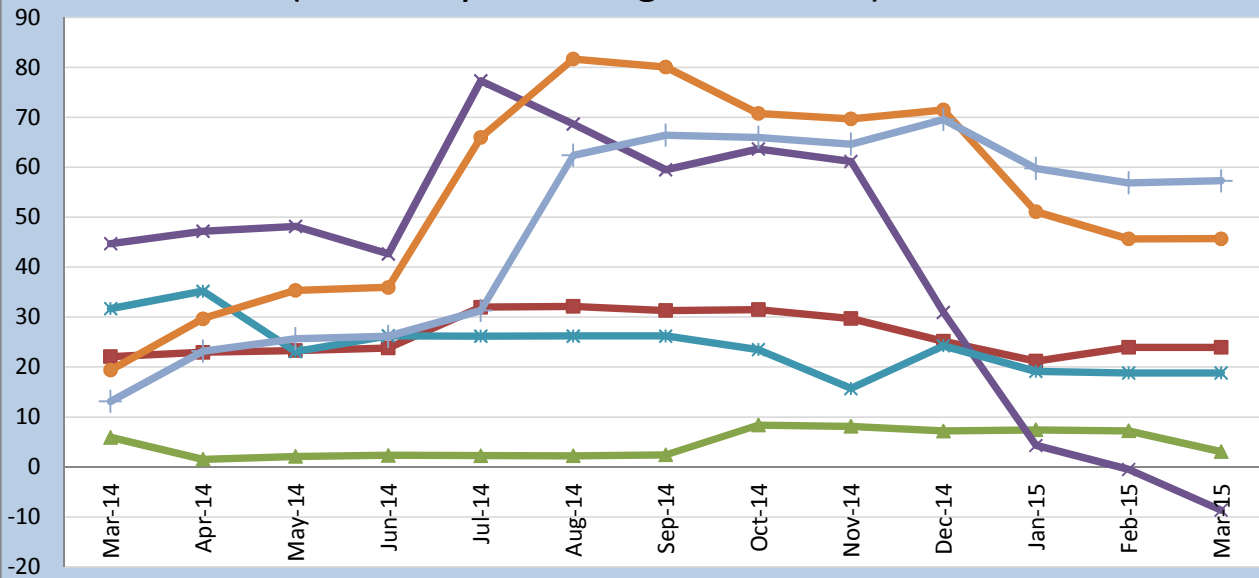
**Table 9: Manufacturing: Yearly Change Rates for March 2014 - March 2015 (%)**

*contd.*

Year / Month	Manufacture of electrical machinery and apparatus n.e.c.	Manufacture of insulated wire and cable	Manufacture of motor vehicles, trailers and semi-trailers	Manufacture of bodies for motor vehicles, trailers and semi-trailers	Manufacture of furniture; manufacturing n.e.c.	Manufacture of furniture	Manufacturing n.e.c.
<i>ISIC</i>	<b>D31</b>	<i>D313</i>	<b>D34</b>	<i>D342</i>	<b>D36</b>	<i>D361</i>	<i>D369</i>
<i>weight</i>	<b>0.41</b>	<i>0.41</i>	<b>0.05</b>	<i>0.05</i>	<b>2.44</b>	<i>2.33</i>	<i>0.11</i>
March-2014	-0.8	-0.8	42.4	42.4	20.0	19.5	38.0
April-2014	-0.7	-0.7	41.5	41.5	18.6	18.4	24.9
May-2014	5.7	5.7	53.9	53.9	18.9	19.4	4.8
June-2014	5.7	5.7	52.7	52.7	24.5	24.8	16.7
July-2014	5.2	5.2	47.3	47.3	26.2	26.4	20.1
August-2014	5.2	5.2	48.3	48.3	32.1	32.5	19.7
September-2014	5.2	5.2	46.8	46.8	34.1	34.5	20.1
October-2014	5.2	5.2	40.2	40.2	32.1	32.6	16.7
November-2014	21.9	21.9	38.8	38.8	31.8	32.3	16.7
December-2014	21.9	21.9	31.4	31.4	32.0	32.5	16.7
January-2015	33.2	33.2	18.5	18.5	25.3	25.6	16.3
February-2015	33.3	33.3	13.8	13.8	29.7	30.1	16.3
March-2015	p 35.1	p 35.1	p 9.4	p 9.4	p 29.0	p 29.4	p 16.3

*p: provisional*

## PPI Inflation for selected subgroups in the Manufacturing Sector (Year-on-year change rates in %)



- Manufacture of food products and beverages
- ▲ Manufacture of wood and of articles of straw etc.
- ✕ Manufacture of coke, refined petroleum products etc.
- ✕ Manufacture of chemicals and chemical products
- ◆ Manufacture of other non-metallic min. products
- + Manufacture of basic metals

*Ghana Statistical Service (GSS)*



**Table 10: Manufacturing: Monthly Change Rates for March 2014 - March 2015 (%)**

Year / Month	Manufacturing	Manufacture of food products and beverages	Production, processing, preservation of meat, fish, fruit, vegetables, oils and fats	Manufacture of dairy products	Manufacture of grain mill products, starch products, and prepared animal feeds	Manufacture of other food products	Manufacture of beverages	Manufacture of textiles	Spinning, weaving and finishing of textiles
<i>ISIC</i>	<i>D</i>	<i>D15</i>	<i>D151</i>	<i>D152</i>	<i>D153</i>	<i>D154</i>	<i>D155</i>	<i>D17</i>	<i>D171</i>
<i>weight</i>	<b>100</b>	<b>25.64</b>	4.60	4.31	4.66	4.80	7.27	<b>4.27</b>	4.28
March-2014	2.6	2.2	6.7	1.4	2.8	3.1	0.0	0.0	0.0
April-2014	2.8	1.1	5.4	0.0	0.0	3.0	0.0	0.0	0.0
May-2014	1.1	0.8	4.9	0.0	0.0	0.3	0.0	0.0	0.0
June-2014	0.8	0.6	2.0	0.0	0.0	3.0	0.0	0.4	0.4
July-2014	10.7	6.7	2.7	0.0	32.7	4.3	2.5	0.0	0.0
August-2014	2.7	0.1	2.8	0.0	0.0	-28.3	13.3	11.2	11.2
September-2014	1.3	2.2	-0.3	0.0	8.5	0.8	2.8	0.0	0.0
October-2014	1.5	3.1	-3.7	17.0	0.0	-3.5	0.0	0.0	0.0
November-2014	-0.3	-0.5	0.9	0.0	-4.8	-0.4	1.0	0.0	0.0
December-2014	-2.0	1.5	4.3	0.0	-1.0	0.0	1.4	20.7	20.7
January-2015	-2.4	-0.1	0.2	0.0	0.0	-0.8	0.0	0.0	0.0
February-2015	1.5	4.2	0.2	0.0	-1.9	48.6	0.0	0.0	0.0
March-2015	p 0.4	p 2.2	p 9.7	p 0.0	p 0.9	p 0.5	p 2.1	p 0.0	p 0.0

*p: provisional*

**Table 10: Manufacturing: Monthly Change Rates for March 2014 - March 2015 (%)**

*contd.*

Year / Month	Tanning of leather; manu facture of luggage, etc	Manufacture of footwear	Manufacture of wood an of articles of straw etc.	Sawmilling and planing of wood	Manufacture of products of wood, cork, straw etc.	Manufacture of paper and paper products	Manufacture of paper and paper products	Publishing, printing and reproduction of rec. media	Publishing	Printing and service activities ...
<i>ISIC</i>	<b>D19</b>	<i>D192</i>	<b>D20</b>	<i>D201</i>	<i>D202</i>	<b>D21</b>	<i>D210</i>	<b>D22</b>	<i>D221</i>	<i>D222</i>
<i>weight</i>	<b>0.12</b>	<i>0.12</i>	<b>9.03</b>	<i>4.94</i>	<i>4.10</i>	<b>0.62</b>	<i>0.62</i>	<b>1.14</b>	<i>0.40</i>	<i>0.74</i>
March-2014	0.0	0.0	4.0	5.4	0.2	0.0	0.0	0.0	0.0	0.0
April-2014	-3.0	-3.0	-4.0	-5.1	-0.9	0.0	0.0	0.1	0.0	0.2
May-2014	0.0	0.0	0.6	0.4	1.1	0.0	0.0	3.2	0.0	5.0
June-2014	18.5	18.5	0.4	0.0	1.6	8.6	8.6	1.3	0.0	2.1
July-2014	1.6	1.6	0.0	0.0	0.0	3.3	3.3	3.1	0.0	4.8
August-2014	0.0	0.0	0.0	0.0	0.1	0.0	0.0	0.0	0.0	0.0
September-2014	0.4	0.4	0.2	-0.1	1.1	0.0	0.0	0.6	0.0	0.9
October-2014	-0.4	-0.4	5.9	7.8	0.2	0.0	0.0	0.0	0.0	0.0
November-2014	0.0	0.0	0.0	0.0	0.0	4.1	4.1	10.6	33.0	0.0
December-2014	-2.5	-2.5	0.0	0.0	0.0	2.5	2.5	-0.3	0.0	-0.8
January-2015	-24.9	-24.9	0.3	0.0	1.0	23.5	23.5	1.7	0.0	3.0
February-2015	1.3	1.3	-0.1	0.0	-0.4	0.0	0.0	0.3	0.0	0.5
March-2015	p 16.3	p 16.3	p 0.0	p 0.0	p 0.0	p 1.5	p 1.5	p 0.0	p 0.0	p 0.0

*p: provisional*

**Table 10: Manufacturing: Monthly Change Rates for March 2014 - March 2015 (%)**

*contd.*

Year / Month	Manufacture of coke, refined petroleum products etc.	Manufacture of refined petroleum products	Manufacture of chemicals and chemical products	Manufacture of basic chemicals	Manufacture of other chemical products	Manufacture of man-made fibres	Manufacture of rubber and plastics products	Manufacture of rubber products	Manufacture of plastics products
<i>ISIC</i>	<b>D23</b>	<i>D232</i>	<b>D24</b>	<i>D241</i>	<i>D242</i>	<i>D243</i>	<b>D25</b>	<i>D251</i>	<i>D252</i>
<i>weight</i>	<b>22.94</b>	<i>22.94</i>	<b>10.15</b>	<i>0.54</i>	<i>9.45</i>	<i>0.16</i>	<b>3.90</b>	<i>0.76</i>	<i>3.14</i>
March-2014	6.4	6.4	0.0	0.0	0.0	0.0	3.1	1.7	3.4
April-2014	1.4	1.4	7.3	0.0	7.6	0.0	0.2	-0.3	0.3
May-2014	0.4	0.4	0.5	0.0	0.5	0.0	-2.2	0.9	-2.9
June-2014	0.3	0.3	2.6	0.0	2.6	0.0	0.6	2.9	0.1
July-2014	24.3	24.3	0.0	0.9	0.0	0.0	8.2	1.7	9.8
August-2014	0.1	0.1	0.0	0.0	0.0	0.0	-0.2	-1.5	0.1
September-2014	1.1	1.1	0.0	0.0	0.0	0.0	7.6	-2.1	9.9
October-2014	-0.2	-0.2	0.5	0.0	0.5	0.0	-0.2	-1.2	0.0
November-2014	-1.6	-1.6	0.3	24.0	0.0	0.0	-1.2	-6.2	0.0
December-2014	-15.3	-15.3	7.4	3.3	7.6	0.0	5.5	3.1	6.1
January-2015	-13.0	-13.0	-0.5	0.0	-0.5	0.0	7.6	0.8	8.7
February-2015	0.4	0.4	-0.2	-16.3	0.0	0.0	3.4	-2.3	4.6
March-2015	-p 2.3	-p 2.3	p 0.0	p 0.0	p 0.0	p 0.0	p 4.5	p 1.2	p 5.2

*p: provisional*

**Table 10: Manufacturing: Monthly Change Rates for March 2014 - March 2015 (%)**

*contd.*

Year / Month	Manufacture of other non-metallic min. products	Manufacture of non-metallic mineral products n.e.c.	Manufacture of basic metals	Manufacture of basic iron and steel	Manufacture of basic precious and non-ferrous metals	Manufacture of fabricated metal products, ...	Manufacture of structural metal products, tanks, reservoirs ...	Manufacture of other fabricated metal products ...	Manufacture of machinery ... n.e.c.	Manufacture of special-purpose machinery
<i>ISIC</i>	<i>D26</i>	<i>D269</i>	<i>D27</i>	<i>D271</i>	<i>D272</i>	<i>D28</i>	<i>D281</i>	<i>D289</i>	<i>D29</i>	<i>D292</i>
<i>weight</i>	<b>8.20</b>	8.20	<b>5.02</b>	2.02	2.65	<b>3.70</b>	1.55	2.15	<b>0.42</b>	0.42
March-2014	0.2	0.2	1.3	0.3	2.0	0.9	1.3	0.6	0.0	0.0
April-2014	9.8	9.8	9.0	3.0	13.9	2.8	0.1	4.9	0.0	0.0
May-2014	4.5	4.5	2.2	3.1	1.6	0.4	0.5	0.4	0.0	0.0
June-2014	0.5	0.5	0.6	0.0	1.1	0.3	0.0	0.5	0.0	0.0
July-2014	22.5	22.5	3.2	0.0	5.7	3.9	2.6	4.8	0.0	0.0
August-2014	8.6	8.6	25.2	48.9	9.6	0.2	0.5	0.0	0.0	0.0
September-2014	-0.9	-0.9	2.5	4.1	1.4	2.3	5.4	0.1	0.0	0.0
October-2014	-4.4	-4.4	0.1	0.0	0.2	18.0	1.8	31.4	0.0	0.0
November-2014	0.0	0.0	0.0	0.0	0.0	0.8	0.0	1.4	0.0	0.0
December-2014	1.1	1.1	3.6	0.0	6.3	0.4	0.9	0.0	0.0	0.0
January-2015	-1.1	-1.1	0.0	0.0	0.0	1.2	2.2	0.5	0.0	0.0
February-2015	0.0	0.0	0.6	0.3	0.9	0.0	0.0	0.0	0.0	0.0
March-2015	p 0.2	p 0.2	p 1.5	p 0.4	p 2.4	p 0.0	p 0.0	p 0.1	p 5.6	p 5.6

*p: provisional*

**Table 10: Manufacturing: Monthly Change Rates for March 2014 - March 2015 (%)**

*contd.*

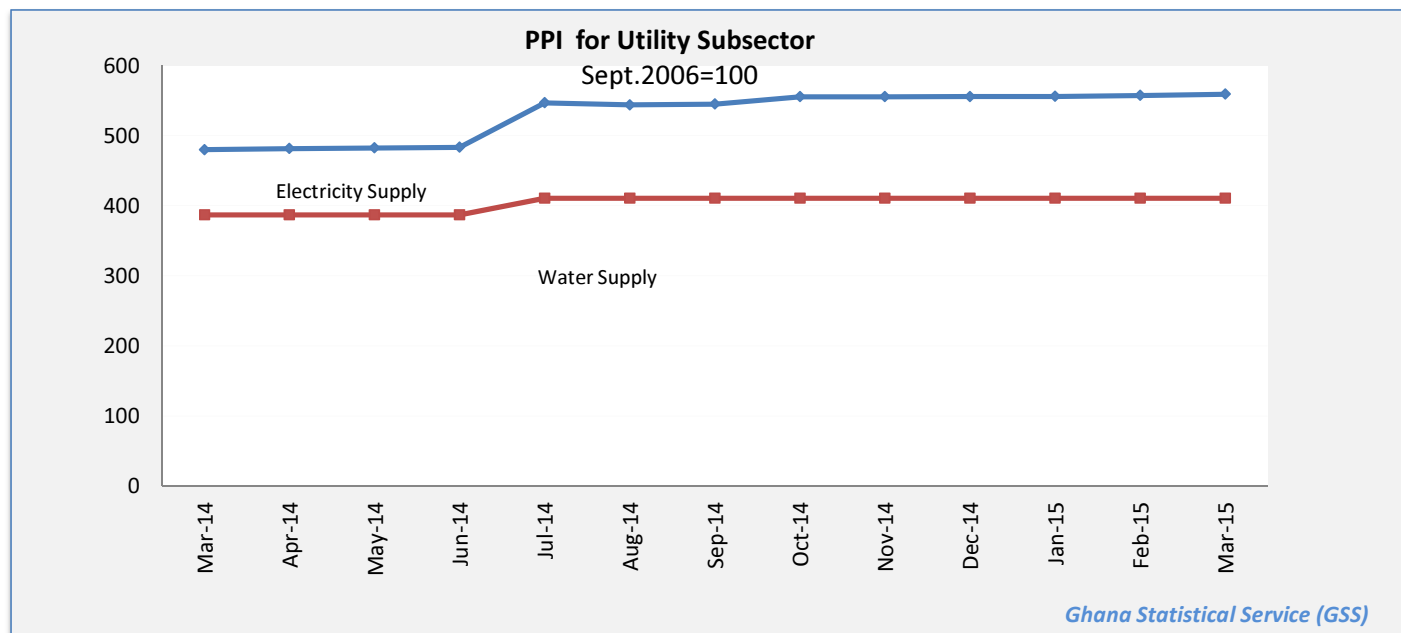
Year / Month	Manufacture of electrical machinery and apparatus n.e.c.	Manufacture of insulated wire and cable	Manufacture of motor vehicles, trailers and semi-trailers	Manufacture of bodies for motor vehicles, trailers and semi-trailers	Manufacture of furniture; manufacturing n.e.c.	Manufacture of furniture	Manufacturing n.e.c.
<i>ISIC</i>	<b>D31</b>	<i>D313</i>	<b>D34</b>	<i>D342</i>	<b>D36</b>	<i>D361</i>	<i>D369</i>
<i>weight</i>	<b>0.41</b>	<i>0.41</i>	<b>0.05</b>	<i>0.05</i>	<b>2.44</b>	<i>2.33</i>	<i>0.11</i>
March-2014	0.0	0.0	6.1	6.1	0.8	0.8	0.0
April-2014	0.0	0.0	0.0	0.0	0.9	0.9	0.0
May-2014	0.0	0.0	10.4	10.4	2.5	2.5	0.0
June-2014	0.0	0.0	2.0	2.0	4.8	4.6	11.8
July-2014	0.0	0.0	0.0	0.0	7.4	7.5	3.0
August-2014	0.0	0.0	1.7	1.7	4.7	4.8	0.0
September-2014	0.0	0.0	1.1	1.1	1.5	1.5	0.3
October-2014	0.0	0.0	-1.6	-1.6	0.1	0.0	0.6
November-2014	15.9	15.9	0.9	0.9	-0.1	-0.1	0.0
December-2014	0.0	0.0	-2.0	-2.0	0.2	0.2	0.0
January-2015	14.8	14.8	-6.4	-6.4	0.4	0.4	0.0
February-2015	0.1	0.1	1.7	1.7	3.5	3.6	0.0
March-2015	p 1.4	p 1.4	p 2.0	p 2.0	p 0.3	p 0.3	p 0.0

*p: provisional*

**Table 11: Utilities: Producer Price Index (Sept 2006=100) for March 2014 - March 2015**

Year / Month	Electricity and water supply (Utilities)	Electricity supply	Production, transmission and distribution of electricity	Water supply	Collection, purification and distribution of water
<i>ISIC</i>	<i>E</i>	<i>E40</i>	<i>E401</i>	<i>E41</i>	<i>E410</i>
<i>weight</i>	<b>100.00</b>	<b>93.25</b>	93.25	<b>6.75</b>	6.75
March-2014	473.4	480.1	480.1	387.3	387.3
April-2014	474.8	481.6	481.6	387.3	387.3
May-2014	475.8	482.7	482.7	387.3	387.3
June-2014	476.5	483.5	483.5	387.3	387.3
July-2014	536.8	547.0	547.0	411.0	411.0
August-2014	534.1	544.0	544.0	411.0	411.0
September-2014	535.1	545.1	545.1	411.0	411.0
October-2014	544.6	555.5	555.5	411.0	411.0
November-2014	544.6	555.5	555.5	411.0	411.0
December-2014	545.0	555.9	555.9	410.9	410.9
January-2015	545.2	556.1	556.1	410.9	410.9
February-2015	546.3	557.4	557.4	410.9	410.9
March-2015	p 548.1	p 559.4	p 559.4	p 410.9	p 410.9

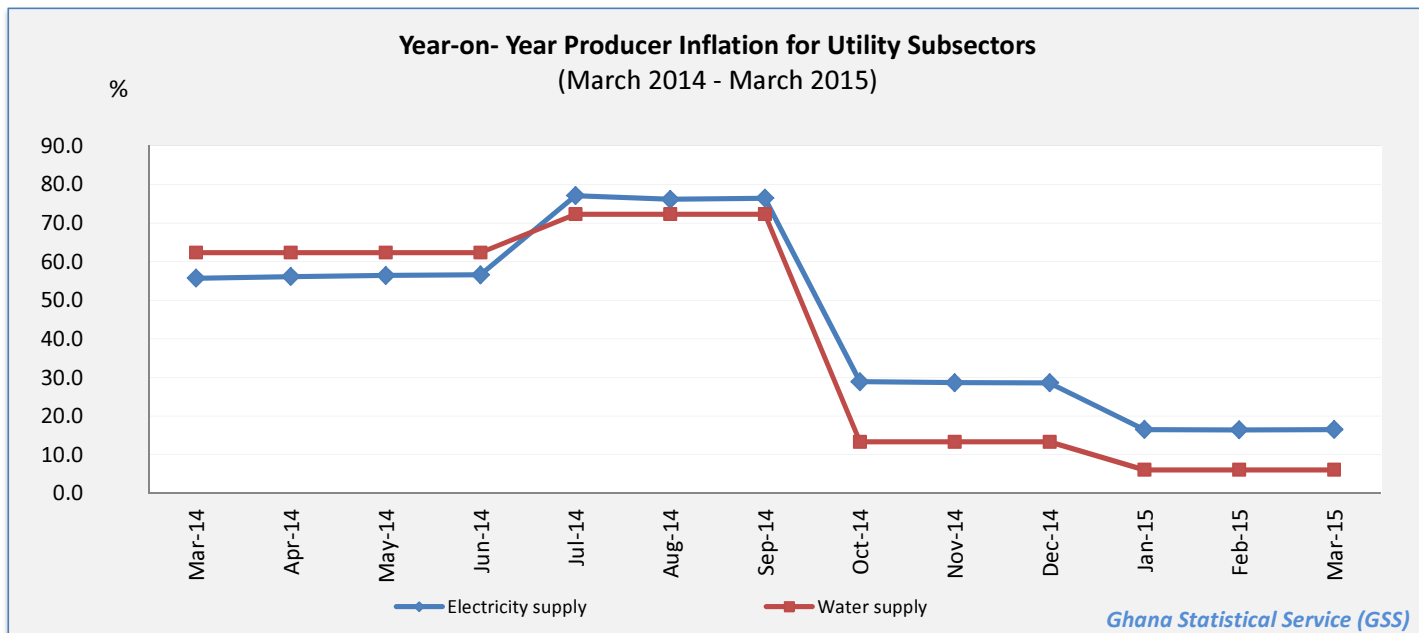
p: provisional



**Table 12: Utilities: Yearly Change Rates for March 2014 - March 2015 (%)**

Year / Month	Electricity and water supply (Utilities)	Electricity supply	Production, transmission and distribution of electricity	Water supply	Collection, purification and distribution of water
<i>ISIC</i>	<i>E</i>	<i>E40</i>	<i>E401</i>	<i>E41</i>	<i>E410</i>
<i>weight</i>	<i>100.00</i>	<i>93.25</i>	<i>93.25</i>	<i>6.75</i>	<i>6.75</i>
March-2014	56.1	55.7	55.7	62.3	62.3
April-2014	56.5	56.1	56.1	62.3	62.3
May-2014	56.8	56.4	56.4	62.3	62.3
June-2014	56.9	56.6	56.6	62.3	62.3
July-2014	76.8	77.1	77.1	72.2	72.2
August-2014	75.8	76.1	76.1	72.2	72.2
September-2014	76.1	76.4	76.4	72.2	72.2
October-2014	27.8	28.9	28.9	13.3	13.3
November-2014	27.6	28.7	28.7	13.3	13.3
December-2014	27.5	28.6	28.6	13.3	13.3
January-2015	15.8	16.5	16.5	6.1	13.8
February-2015	15.7	16.4	16.4	6.1	14.1
March-2015	p 15.8	p 16.5	p 16.5	p 6.1	p 6.1

*p: provisional*



**Table 13: Utilities: Monthly Change Rates for March 2014 - March 2015 (%)**

Year / Month	Electricity and water supply (Utilities)	Electricity supply	Production, transmission and distribution of electricity	Water supply	Collection, purification and distribution of water
ISIC	E	E40	E401	E41	E410
weight	100.00	93.25	93.25	6.75	6.75
March-2014	0.3	0.3	0.3	0.0	7.6
April-2014	0.3	0.3	0.3	0.0	0.0
May-2014	0.2	0.2	0.2	0.0	0.0
June-2014	0.2	0.2	0.2	0.0	0.0
July-2014	12.6	13.1	13.1	6.1	6.1
August-2014	-0.5	-0.5	-0.5	0.0	0.0
September-2014	0.2	0.2	0.2	0.0	0.0
October-2014	1.8	1.9	1.9	0.0	0.0
November-2014	0.0	0.0	0.0	0.0	0.0
December-2014	0.1	0.1	0.1	0.0	0.0
January-2015	0.0	0.0	0.0	0.0	0.0
February-2015	0.2	0.2	0.2	0.0	0.0
March-2015	p 0.3	p 0.4	p 0.4	p 0.0	p 0.0

*p: provisional*

