



**GHANA STATISTICAL SERVICE (GSS)**  
*Statistics for Development and Progress*

Statistical Bulletin

**PRODUCER PRICE INDEX (PPI)**  
**July 2014**

Ghana Statistical Service (GSS)

**Statistical Bulletin**

PRODUCER PRICE INDEX (PPI)

**J U L Y , 2 0 1 4**

**Date: August 27, 2014**

*For technical enquiries contact:*

*Ghana Statistical Service (GSS), Head Office*

## Producer Price Index (PPI)

July 2014

### CONTENTS

HIGHLIGHTS FOR JULY 2014	2
Table 1: Producer Price Index for July 2013 - July 2014	4
Table 2: Producer Price Index (Sep.2006=100) by sectors for July 2013 - July 2014	5
Table 3: Producer Price Index: Yearly Change Rates by Sector for July 2013 - July 2014 (%)	6
Table 4: Producer Price Index: Monthly Change Rates by Sector for July 2013 - July 2014 (%)	7
Table 5: Mining And Quarrying: Producer Price Index (Sept 2006=100) July 2013 - July 2014	8
Table 6: Mining and Quarrying: Yearly Change Rates for July 2013 - July 2014(%)	9
Table 8: Manufacturing Producer Price Index (Sept 2006=100) for July 2013 - July 2014	11
Table 9: Manufacturing: Yearly Change Rates for July 2013 - July 2014 (%)	17
Table 10: Manufacturing: Monthly Change Rates for July 2013 - July 2014 (%)	23
Table 11: Utilities: Producer Price Index (Sept 2006=100) for July 2013 - July 2014	28
Table 12: Utilities: Yearly Change Rates for July 2013 - July 2014 (%)	29
Table 13: Utilities: Monthly Change Rates for July 2013 - July 2014 (%)	30

## **HIGHLIGHTS FOR JULY 2014**

### **Producer Price Inflation Rate Increased to 47.4% in July 2014**

The Producer Price Index (PPI) measures the average change over time in the prices received by domestic producers for the production of their goods and services. The PPI for Ghana reports the producer price indices with reference to September 2006, the base period.

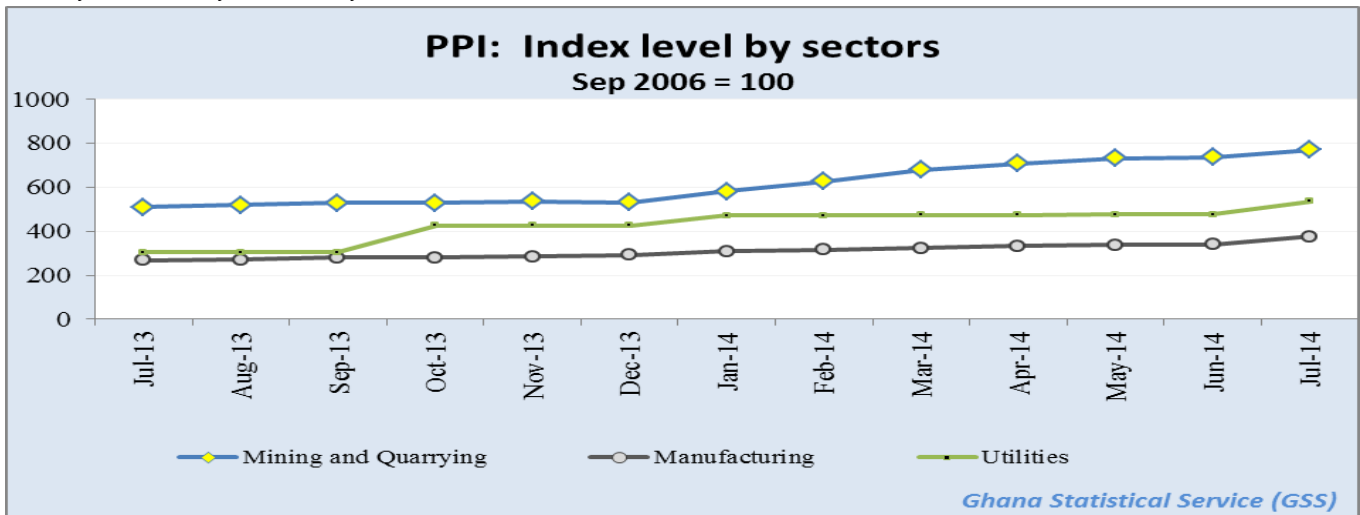
This release shows the producer price changes since September 2006, as well as the annual (year-on-year) and monthly inflation rates, for all industry and three major sub-sectors of industry (Mining and Quarrying, Manufacturing, and Utilities) for the last twelve months. The figures for the month of July 2014 are provisional, and are subject to revision when additional data become available. All other indicators are final.

The Producer Price Inflation rate for July 2014 was 47.4 percent. This rate indicates that, between July 2013 and July 2014 (year-on-year), the PPI increased by 47.4 percent, representing a 14.3 percentage point increase in producer inflation relative to the rate recorded in June 2014 (33.1%). The month-on-month change in producer price index between June 2014 and July 2014 was 10.2 percent.

In July 2014, the producer price inflation in the Mining and Quarrying sub-sector increased by 13.6 percentage points over the June 2014 rate of 37.3 percent, to record 50.9 percent in July 2014. Manufacturing, which constitutes more than two-thirds of total industry, increased by 13.2 percentage points to record 40.3 percent. The rate for the Utilities sub-sector increased by 76.8 percent in July 2014, suggesting a 19.8 percentage point increase over the June 2014 rate.

During the month of July 2014, three out of the sixteen major groups in the manufacturing sub-sector recorded inflation rates higher than the sector average of 40.3 percent (Fig. 2). Manufacture of coke, refined petroleum and nuclear fuel recorded the highest inflation rate of 77.3 percent whilst producer prices in the manufacture of machinery and equipment n.ec recorded the lowest producer price inflation rate.

**PPI** by Sectors; July 2013 to July 2014



**Manufacture of coke, refined petroleum products etc:** Annual rate was 77.3 percent for July 2014, as compare to 44.7 percent in June 2014.

**Manufacture of other non-metallic mineral product:** Annual rate was 65.2 percent for July 2014, as compare to 36.0 percent in June 2014.

**Manufacture of motor vehicles, trailers and semi-trailers:** Annual rate was 47.3 percent for June as compared to 52.7 percent last month.

**Electricity and Water Supply:** Annual rate is 56.6 percent; as compare to 77.1 percent in June 2014.

More detailed time series data is posted on the GSS website [[www.statsghana.gov.gh](http://www.statsghana.gov.gh)].

**The next release date is 24th September, 2014**

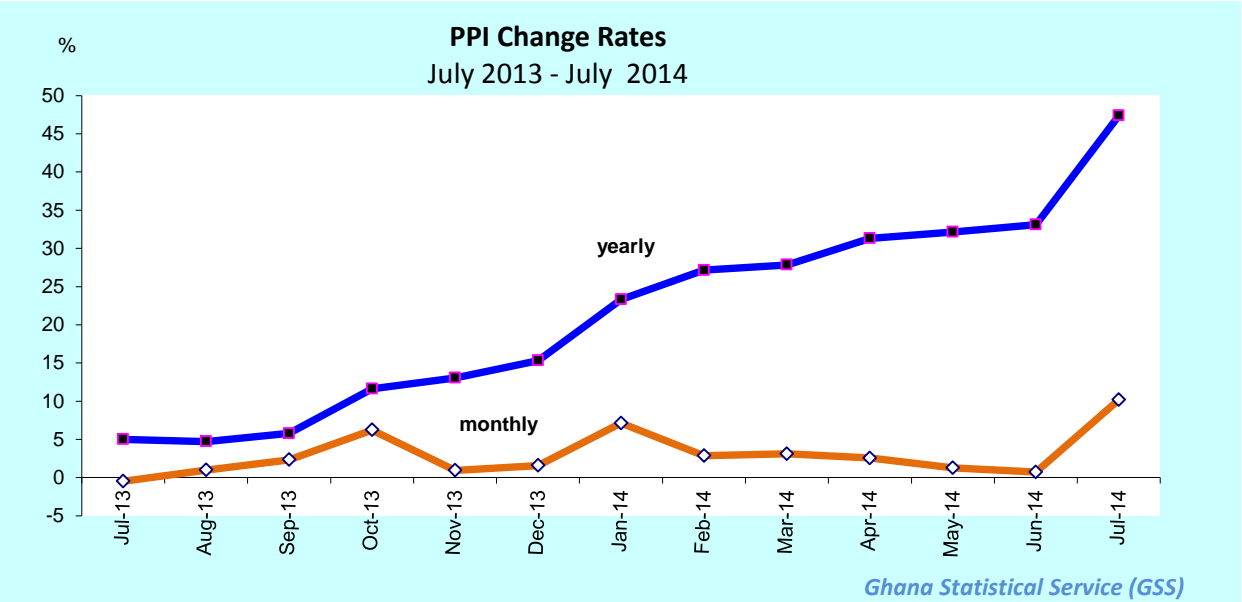




**Table 1: Producer Price Index for July 2013 - July 2014**

Year / Month	Index level	Monthly	Yearly
	Sept 2006=100	Change Rate (%)	
2009 Average	172.5	2.1	15.4
2010 Average	204.7	1.4	18.8
2011 Average	242.6	1.1	18.7
2012 Average	284.2	1.3	17.1
2013 Average	310.7	1.2	9.3
July-13	302.4	-0.5	5.0
August-13	305.4	1.0	4.7
September-13	312.5	2.3	5.8
October-13	332.0	6.2	11.6
November-13	335.1	0.9	13.0
December-13	340.4	1.6	15.3
January-14	364.6	7.1	23.3
February-14	375.0	2.9	27.1
March-14	386.7	3.1	27.8
April-14	396.6	2.6	31.3
May-14	401.7	1.3	32.2
June-14	404.5	0.7	33.1
July-14	p 445.7	p 10.2	p 47.4

p: provisional

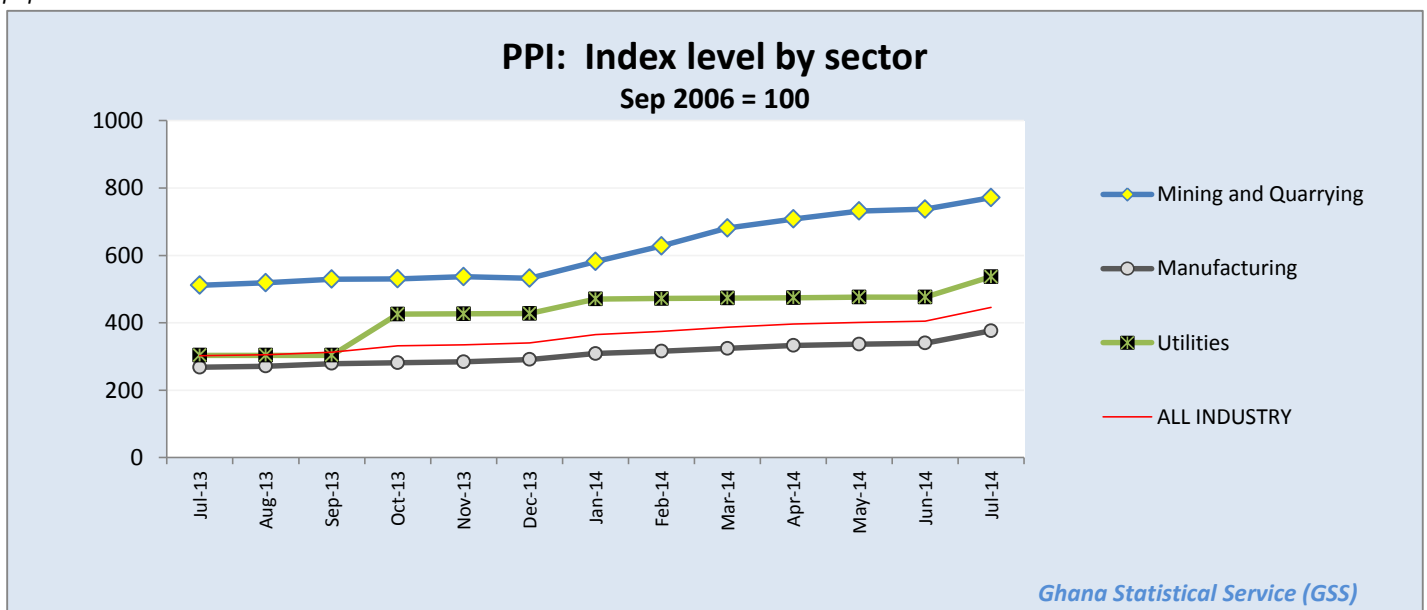




**Table 2: Producer Price Index (Sep.2006=100) by sectors for July 2013 - July 2014**

Year / Month	Mining and Quarrying	Manufacturing	Utilities	ALL INDUSTRY
<i>ISIC</i>	<i>C</i>	<i>D</i>	<i>E</i>	<i>C+D+E</i>
<i>weight</i>	13.97	69.75	16.28	100.00
2009 average	282.2	156.6	159.4	172.5
2010 average	349.7	176.3	226.0	204.7
2011 average	467.0	200.5	281.3	242.6
2012 average	584.2	237.7	301.9	284.2
2013 average	551.9	268.7	334.3	310.7
July-2013	511.2	268.1	303.7	302.4
August-2013	518.5	271.2	303.7	305.4
September-2013	529.6	279.1	303.8	312.5
October-2013	530.5	281.3	426.1	332.0
November-2013	537.0	284.3	426.8	335.1
December-2013	531.9	291.4	427.3	340.4
January-2014	582.0	308.6	470.9	364.6
February-2014	627.7	315.9	472.1	375.0
March-2014	681.0	324.1	473.4	386.7
April-2014	707.8	333.2	474.8	396.6
May-2014	731.7	336.7	475.8	401.7
June-2014	737.1	339.6	476.5	404.5
July-2014	p 771.6	p 376.2	p 536.8	p 445.7

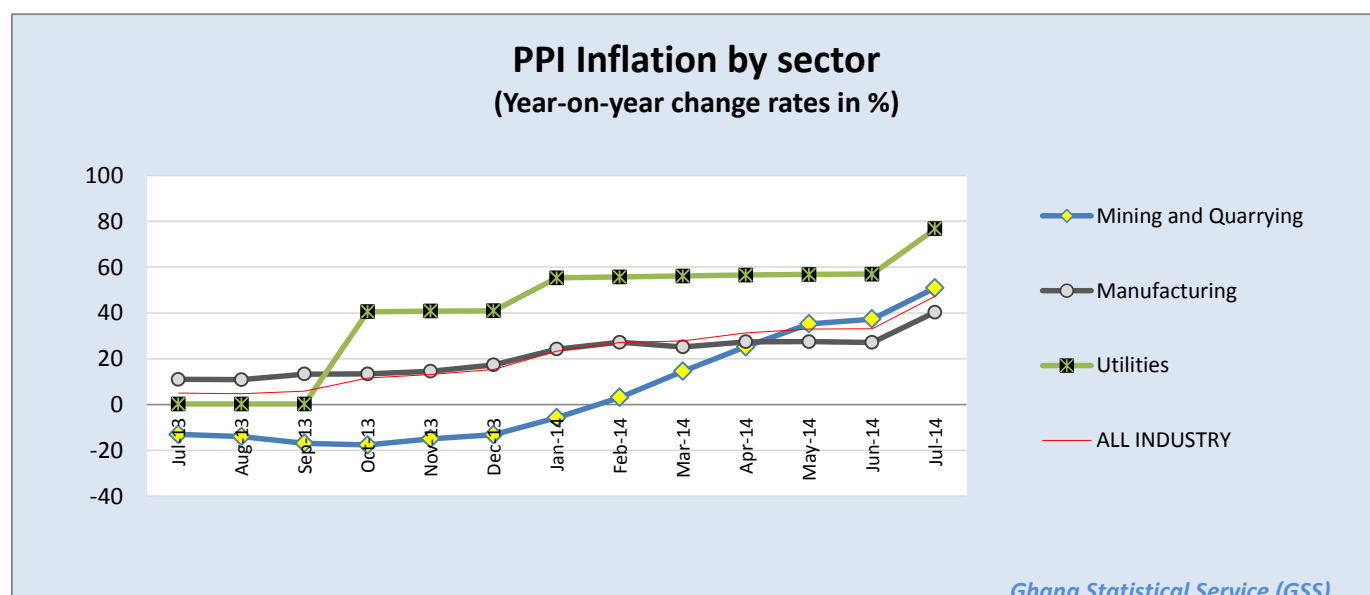
p: provisional



**Table 3: Producer Price Index: Yearly Change Rates by Sector for July 2013 - July 2014 (%)**

Year / Month	Mining and Quarrying	Manufacturing	Utilities	ALL INDUSTRY
<i>ISIC</i>	<i>C</i>	<i>D</i>	<i>E</i>	<i>C+D+E</i>
<i>weight</i>	13.97	69.75	16.28	100.00
2009 average	47.3	12.7	1.4	15.4
2010 average	24.3	13.3	41.7	18.8
2011 average	33.7	13.7	32.7	18.7
2012 average	25.5	18.5	7.4	17.1
2013 average	-4.8	13.0	10.7	9.3
July-2013	-13.1	10.9	0.2	5.0
August-2013	-14.1	10.8	0.2	4.7
September-2013	-16.9	13.3	0.2	5.8
October-2013	-17.7	13.3	40.5	11.6
November-2013	-14.9	14.5	40.8	13.0
December-2013	-13.2	17.4	41.0	15.3
January-2014	-5.8	24.2	55.3	23.3
February-2014	3.1	27.2	55.7	27.1
March-2014	14.5	25.1	56.1	27.8
April-2014	25.2	27.4	56.5	31.3
May-2014	35.2	27.5	56.8	33.0
June-2014	37.3	27.1	56.9	33.1
July-2014	p 50.9	p 40.3	p 76.8	p 47.4

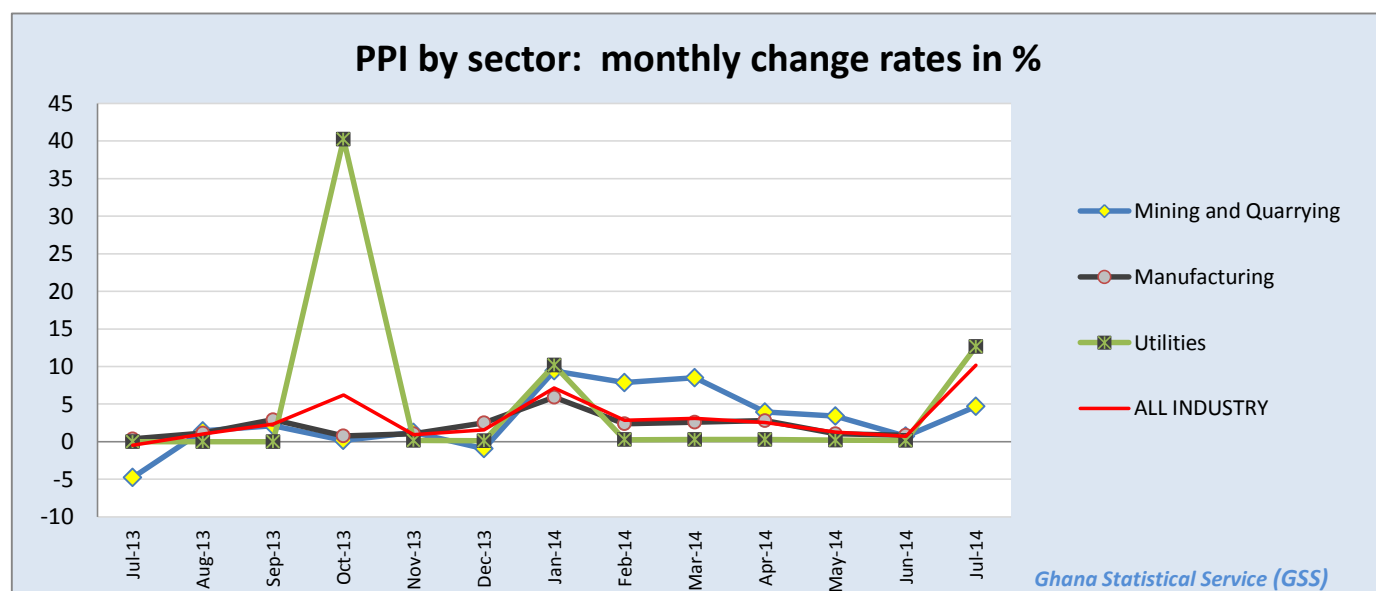
*p: provisional*



**Table 4: Producer Price Index: Monthly Change Rates by Sector for July 2013 - July 2014 (%)**

Year / Month	Mining and Quarrying	Manufacturing	Utilities	ALL INDUSTRY
<i>ISIC</i>	<i>C</i>	<i>D</i>	<i>E</i>	<i>C+D+E</i>
<i>weight</i>	13.97	69.75	16.28	100.00
2009 average	4.3	2.1	0.1	2.1
2010 average	1.9	0.4	6.0	1.4
2011 average	1.5	1.2	0.7	1.1
2012 average	2.1	1.5	0.1	1.3
2013 average	-1.1	1.3	3.4	1.2
July-2013	-4.8	0.4	0.0	-0.5
August-2013	1.4	1.1	0.0	1.0
September-2013	2.1	2.9	0.0	2.3
October-2013	0.2	0.8	40.3	6.2
November-2013	1.2	1.1	0.2	0.9
December-2013	-0.9	2.5	0.1	1.6
January-2014	9.4	5.9	10.2	7.1
February-2014	7.9	2.4	0.3	2.9
March-2014	8.5	2.6	0.3	3.1
April-2014	3.9	2.8	0.3	2.6
May-2014	3.4	1.1	0.2	1.3
June-2014	0.7	0.8	0.2	0.7
July-2014	p 4.7	p 10.8	p 12.6	p 10.2

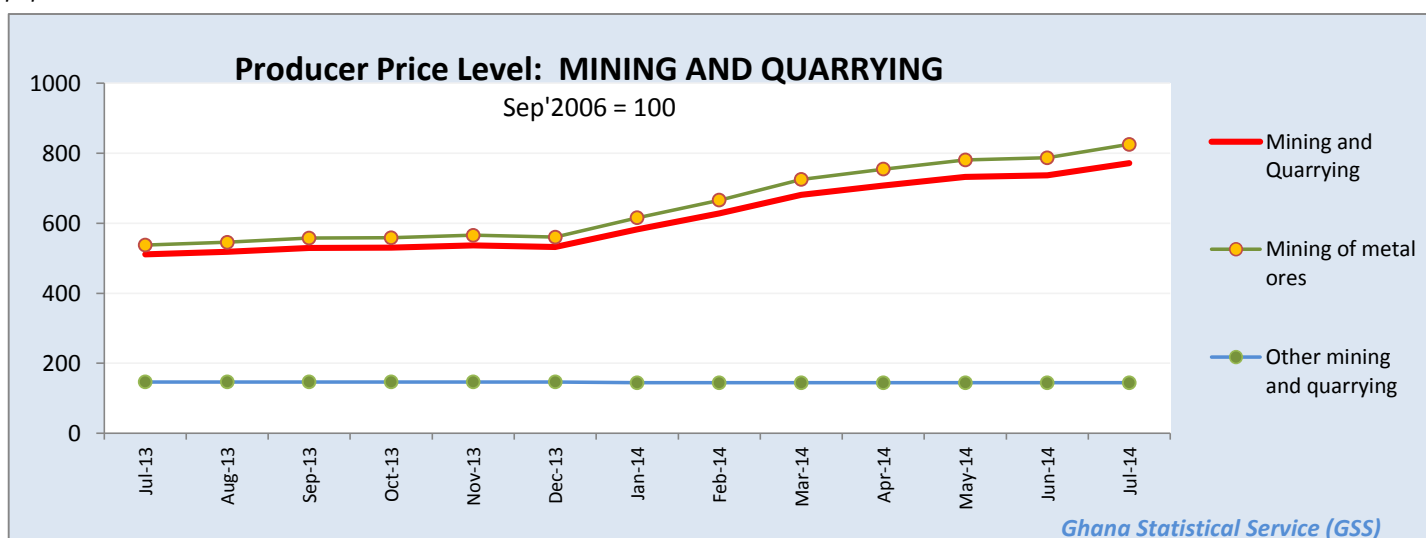
*p: provisional*



**Table 5: Mining And Quarrying: Producer Price Index (Sept 2006=100) July 2013 - July 2014**

Year / Month	Mining and Quarrying	Mining of metal ores	Mining of non-ferrous metal ores	Other mining and quarrying	Quarrying of stone, sand & clay	Mining and quarrying n.e.c.
<i>ISIC</i>	<i>C</i>	<i>C13</i>	<i>C132</i>	<i>C14</i>	<i>C141</i>	<i>C142</i>
<i>weight</i>	<b>100.00</b>	<b>95.01</b>	<b>95.01</b>	<b>4.99</b>	<b>3.42</b>	<b>0.87</b>
2009 average	<b>282.2</b>	<b>292.3</b>	292.3	<b>118.9</b>	114.4	138.3
2010 average	<b>349.7</b>	<b>367.1</b>	367.1	<b>100.8</b>	92.6	157.9
2011 average	<b>467.0</b>	<b>494.9</b>	494.9	<b>107.7</b>	99.1	156.3
2012 average	<b>584.2</b>	<b>618.7</b>	618.7	<b>140.7</b>	138.8	148.4
2013 average	<b>551.9</b>	<b>582.2</b>	582.2	<b>146.1</b>	142.4	161.8
July-2013	<b>511.2</b>	<b>537.5</b>	537.5	<b>146.6</b>	143.0	161.8
August-2013	<b>518.5</b>	<b>545.5</b>	545.5	<b>146.6</b>	143.0	161.8
September-2013	<b>529.6</b>	<b>557.6</b>	557.6	<b>146.6</b>	143.0	161.8
October-2013	<b>530.5</b>	<b>558.6</b>	558.6	<b>146.6</b>	143.0	161.8
November-2013	<b>537.0</b>	<b>565.7</b>	565.7	<b>146.6</b>	143.0	161.8
December-2013	<b>531.9</b>	<b>560.2</b>	560.2	<b>146.6</b>	143.0	161.8
January-2014	<b>582.0</b>	<b>615.4</b>	615.4	<b>144.6</b>	140.6	161.8
February-2014	<b>627.7</b>	<b>665.8</b>	665.8	<b>144.6</b>	140.6	161.8
March-2014	<b>681.0</b>	<b>724.8</b>	724.8	<b>144.6</b>	140.6	161.8
April-2014	<b>707.8</b>	<b>754.4</b>	754.4	<b>144.6</b>	140.6	161.8
May-2014	<b>731.7</b>	<b>781.0</b>	781.0	<b>144.6</b>	140.6	161.8
June-2014	<b>737.1</b>	<b>786.9</b>	786.9	<b>144.6</b>	140.6	161.8
July-2014	<b>p 771.6</b>	<b>p 825.2</b>	p 825.2	<b>p 144.6</b>	p 140.6	p 161.8

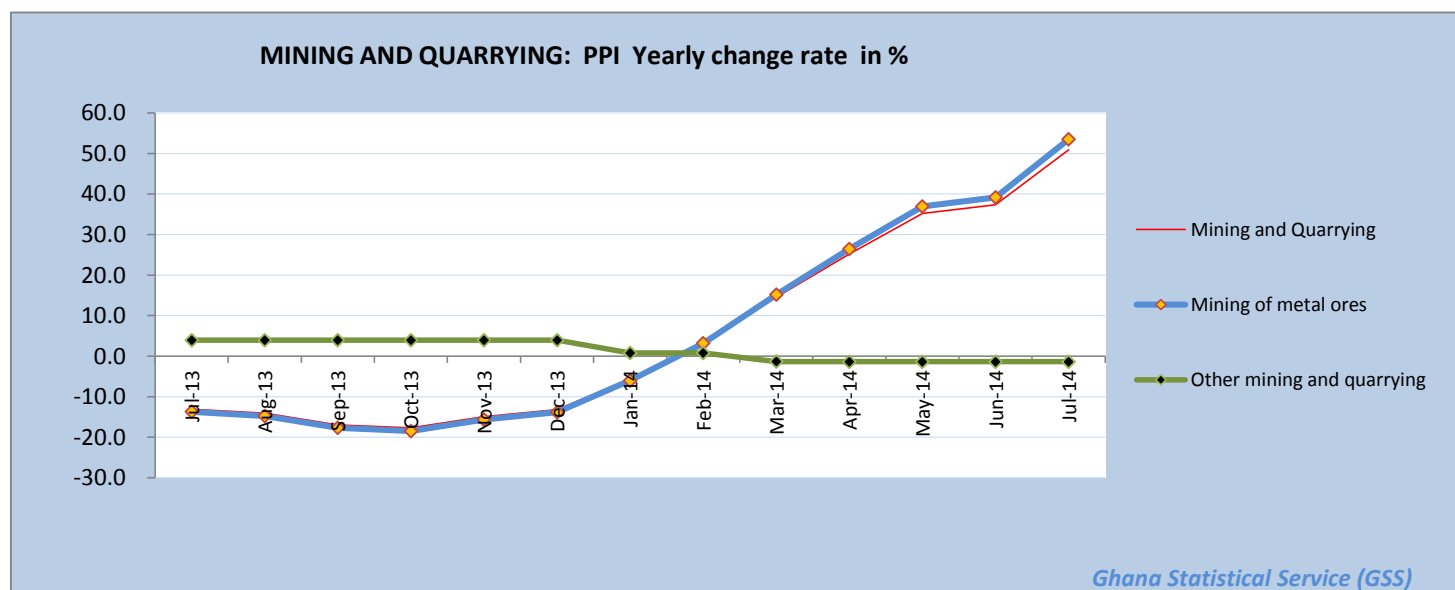
p: provisional



**Table 6: Mining and Quarrying: Yearly Change Rates for July 2013 - July 2014(%)**

Year / Month	Mining and Quarrying	Mining of metal ores	Mining of non-ferrous metal ores	Other mining and quarrying	Quarrying of stone, sand & clay	Mining and quarrying n.e.c.
<i>ISIC</i>	<i>C</i>	<i>C13</i>	<i>C132</i>	<i>C14</i>	<i>C141</i>	<i>C142</i>
<i>weight</i>	<b>100.00</b>	<b>95.01</b>	<b>95.01</b>	<b>4.99</b>	<b>3.42</b>	<b>0.87</b>
2009 average	<b>47.3</b>	<b>49.2</b>	49.2	<b>2.3</b>	8.8	-4.8
2010 average	<b>24.3</b>	<b>26.1</b>	26.1	<b>-15.0</b>	-18.8	14.4
2011 average	<b>33.7</b>	<b>34.9</b>	34.9	<b>6.8</b>	7.0	2.6
2012 average	<b>25.5</b>	<b>25.4</b>	25.4	<b>30.7</b>	40.1	-4.6
2013 average	<b>-4.8</b>	<b>-5.1</b>	-5.1	<b>3.9</b>	2.6	9.0
July-2013	<b>-13.1</b>	<b>-13.7</b>	-13.7	<b>4.0</b>	2.7	9.0
August-2013	<b>-14.1</b>	<b>-14.7</b>	-14.7	<b>4.0</b>	2.7	9.0
September-2013	<b>-16.9</b>	<b>-17.7</b>	-17.7	<b>4.0</b>	2.7	9.0
October-2013	<b>-17.7</b>	<b>-18.5</b>	-18.5	<b>4.0</b>	2.7	9.0
November-2013	<b>-14.9</b>	<b>-15.6</b>	-15.6	<b>4.0</b>	2.7	9.0
December-2013	<b>-13.2</b>	<b>-13.8</b>	-13.8	<b>4.0</b>	2.7	9.0
January-2014	<b>-5.8</b>	<b>-6.0</b>	-6.0	<b>0.8</b>	1.0	0.0
February-2014	<b>3.1</b>	<b>3.2</b>	3.2	<b>0.8</b>	1.0	0.0
March-2014	<b>14.5</b>	<b>15.2</b>	15.2	<b>-1.3</b>	-1.6	0.0
April-2014	<b>25.2</b>	<b>26.4</b>	26.4	<b>-1.4</b>	-1.7	0.0
May-2014	<b>35.2</b>	<b>36.9</b>	36.9	<b>-1.4</b>	-1.7	0.0
June-2014	<b>37.3</b>	<b>39.1</b>	39.1	<b>-1.4</b>	-1.7	0.0
July-2014	<b>p 50.9</b>	<b>p 53.5</b>	p 53.5	<b>-p 1.4</b>	-p 1.7	p 0.0

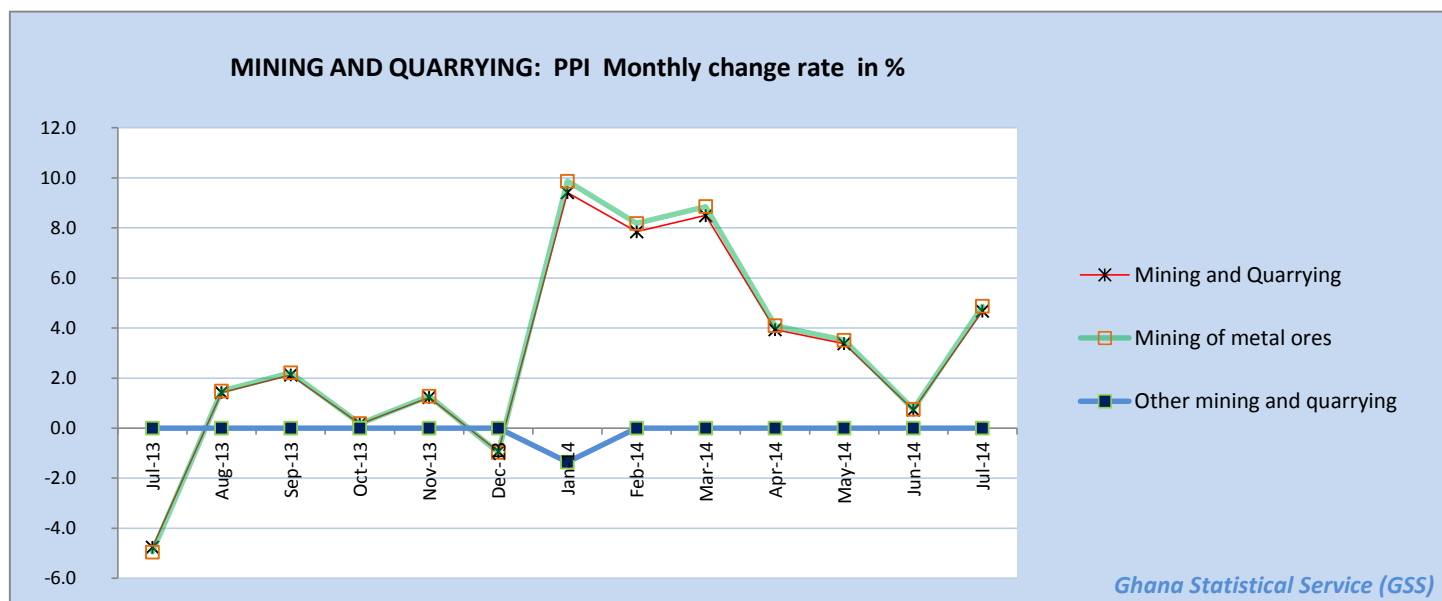
*p: provisional*



**Table 7: Mining and Quarrying: Monthly Change Rates for July 2013 - July 2014 (%)**

Year / Month	Mining and Quarrying	Mining of metal ores	Mining of non-ferrous metal ores	Other mining and quarrying	Quarrying of stone, sand & clay	Mining and quarrying n.e.c.
<i>ISIC</i>	<i>C</i>	<i>C13</i>	<i>C132</i>	<i>C14</i>	<i>C141</i>	<i>C142</i>
<i>weight</i>	<b>100.00</b>	<b>95.01</b>	<b>95.01</b>	<b>4.99</b>	<b>3.42</b>	<b>0.87</b>
2009 average	<b>4.3</b>	<b>4.5</b>	4.5	<b>-0.9</b>	-1.0	-0.1
2010 average	<b>1.9</b>	<b>2.0</b>	2.0	<b>-0.5</b>	-0.8	3.4
2011 average	<b>1.5</b>	<b>1.6</b>	1.6	<b>0.5</b>	0.6	-1.9
2012 average	<b>2.1</b>	<b>2.1</b>	2.1	<b>2.4</b>	3.1	0.0
2013 average	<b>-1.1</b>	<b>-1.2</b>	-1.2	<b>0.3</b>	0.2	0.8
July-2013	<b>-4.8</b>	<b>-4.9</b>	-4.9	<b>0.0</b>	0.0	0.0
August-2013	<b>1.4</b>	<b>1.5</b>	1.5	<b>0.0</b>	0.0	0.0
September-2013	<b>2.1</b>	<b>2.2</b>	2.2	<b>0.0</b>	0.0	0.0
October-2013	<b>0.2</b>	<b>0.2</b>	0.2	<b>0.0</b>	0.0	0.0
November-2013	<b>1.2</b>	<b>1.3</b>	1.3	<b>0.0</b>	0.0	0.0
December-2013	<b>-0.9</b>	<b>-1.0</b>	-1.0	<b>0.0</b>	0.0	0.0
January-2014	<b>9.4</b>	<b>9.9</b>	9.9	<b>-1.4</b>	-1.7	0.0
February-2014	<b>7.9</b>	<b>8.2</b>	8.2	<b>0.0</b>	0.0	0.0
March-2014	<b>8.5</b>	<b>8.9</b>	8.9	<b>0.0</b>	0.0	0.0
April-2014	<b>3.9</b>	<b>4.1</b>	4.1	<b>0.0</b>	0.0	0.0
May-2014	<b>3.4</b>	<b>3.5</b>	3.5	<b>0.0</b>	0.0	0.0
June-2014	<b>0.7</b>	<b>0.8</b>	0.8	<b>0.0</b>	0.0	0.0
July-2014	<b>p 4.7</b>	<b>p 4.9</b>	p 4.9	<b>p 0.0</b>	p 0.0	p 0.0

*p: provisional*



**Table 8: Manufacturing Producer Price Index (Sept 2006=100) for July 2013 - July 2014**

Year / Month	Manufacturing	Manufacture of food products and beverages	Production, processing, preservation of meat, fish, fruit, vegetables, oils and fats	Manufacture of dairy products	Manufacture of grain mill products, starch products, and prepared animal feeds	Manufacture of other food products	Manufacture of beverages	Manufacture of textiles	Spinning, weaving and finishing of textiles
<i>ISIC</i>	<i>D</i>	<i>D15</i>	<i>D151</i>	<i>D152</i>	<i>D153</i>	<i>D154</i>	<i>D155</i>	<i>D17</i>	<i>D171</i>
<i>weight</i>	<b>100</b>	<b>25.64</b>	<b>4.60</b>	<b>4.31</b>	<b>4.66</b>	<b>4.80</b>	<b>7.27</b>	<b>4.27</b>	<b>4.28</b>
2009 average	<b>156.6</b>	<b>170.3</b>	204.0	144.8	222.9	150.7	160.6	<b>139.1</b>	139.1
2010 average	<b>176.3</b>	<b>198.1</b>	199.6	173.2	232.8	184.7	211.9	<b>150.5</b>	150.5
2011 average	<b>200.5</b>	<b>222.0</b>	225.5	193.2	286.1	216.4	219.5	<b>189.5</b>	189.5
2012 average	<b>237.7</b>	<b>260.3</b>	285.3	216.3	329.3	221.7	278.2	<b>265.5</b>	265.5
2013 average	<b>268.7</b>	<b>293.9</b>	316.6	249.3	343.7	271.2	315.4	<b>304.6</b>	304.6
July-2013	<b>268.1</b>	<b>289.0</b>	301.1	247.6	335.2	270.1	311.8	<b>302.7</b>	302.7
August-2013	<b>271.2</b>	<b>289.0</b>	298.8	247.6	335.2	272.9	311.8	<b>302.7</b>	302.7
September-2013	<b>279.1</b>	<b>297.2</b>	348.0	247.6	335.2	285.6	311.8	<b>314.0</b>	314.0
October-2013	<b>281.3</b>	<b>306.0</b>	356.4	247.6	364.1	285.9	324.5	<b>314.0</b>	314.0
November-2013	<b>284.3</b>	<b>308.5</b>	369.3	247.6	364.1	293.7	324.4	<b>314.0</b>	314.0
December-2013	<b>291.4</b>	<b>324.4</b>	383.9	286.4	364.1	298.3	324.4	<b>313.4</b>	313.4
January-2014	<b>308.6</b>	<b>334.9</b>	414.3	298.6	372.4	298.3	329.4	<b>322.3</b>	322.3
February-2014	<b>315.9</b>	<b>341.1</b>	438.4	298.6	380.6	314.1	329.4	<b>322.3</b>	322.3
March-2014	<b>324.1</b>	<b>348.6</b>	467.9	302.6	391.1	323.8	329.4	<b>322.3</b>	322.3
April-2014	<b>333.2</b>	<b>352.5</b>	492.9	302.6	391.1	333.5	329.4	<b>322.3</b>	322.3
May-2014	<b>336.7</b>	<b>355.3</b>	517.1	302.6	391.1	334.6	329.6	<b>322.3</b>	322.3
June-2014	<b>339.6</b>	<b>357.5</b>	527.2	302.6	391.1	344.7	329.6	<b>323.6</b>	323.6
July-2014	<b>p 376.2</b>	<b>p 383.2</b>	<b>p 541.2</b>	<b>p 302.6</b>	<b>p 519.0</b>	<b>p 375.4</b>	<b>p 337.7</b>	<b>p 323.6</b>	<b>p 323.6</b>

*p: provisional*

**Table 8: Manufacturing Producer Price Index (Sept 2006=100) for July 2013 - July 2014**

*contd.*

Year / Month	Tanning of leather; manu facture of luggage, etc	Manufacture of footwear	Manufacture of wood an of articles of straw etc.	Sawmilling and planing of wood	Manufacture of products of wood, cork, straw etc.	Manufacture of paper and paper products	Manufacture of paper and paper products	Publishing, printing and reproduction of rec. media	Publishing	Printing and service activities ...
<i>ISIC</i>	<i>D19</i>	<i>D192</i>	<i>D20</i>	<i>D201</i>	<i>D202</i>	<i>D21</i>	<i>D210</i>	<i>D22</i>	<i>D221</i>	<i>D222</i>
<i>weight</i>	<b>0.12</b>	<i>0.12</i>	<b>9.03</b>	<i>4.94</i>	<i>4.10</i>	<b>0.62</b>	<i>0.62</i>	<b>1.14</b>	<i>0.40</i>	<i>0.74</i>
2009 average	<b>196.9</b>	196.9	<b>193.6</b>	223.1	136.1	<b>136.9</b>	136.9	<b>195.3</b>	185.6	202.8
2010 average	<b>218.0</b>	218.0	<b>183.2</b>	193.3	157.2	<b>153.0</b>	153.0	<b>232.0</b>	243.2	225.9
2011 average	<b>220.2</b>	220.2	<b>193.7</b>	197.8	183.6	<b>196.7</b>	196.7	<b>283.4</b>	322.7	264.3
2012 average	<b>240.7</b>	240.7	<b>205.4</b>	207.4	200.0	<b>199.3</b>	199.3	<b>369.9</b>	423.5	344.7
2013 average	<b>279.3</b>	279.3	<b>208.2</b>	205.3	216.6	<b>228.0</b>	228.0	<b>442.4</b>	510.5	409.8
July-2013	<b>278.1</b>	278.1	<b>208.3</b>	205.1	217.6	<b>241.1</b>	241.1	<b>435.8</b>	522.8	394.6
August-2013	<b>278.1</b>	278.1	<b>208.4</b>	205.1	218.1	<b>241.1</b>	241.1	<b>435.8</b>	522.8	394.6
September-2013	<b>285.4</b>	285.4	<b>208.5</b>	205.1	218.4	<b>234.6</b>	234.6	<b>445.3</b>	522.8	408.0
October-2013	<b>285.4</b>	285.4	<b>208.7</b>	205.1	219.1	<b>234.7</b>	234.7	<b>478.0</b>	500.0	466.5
November-2013	<b>293.7</b>	293.7	<b>209.2</b>	205.1	221.0	<b>234.9</b>	234.9	<b>478.0</b>	500.0	466.5
December-2013	<b>302.3</b>	302.3	<b>211.0</b>	205.1	228.6	<b>235.0</b>	235.0	<b>478.0</b>	500.0	466.5
January-2014	<b>323.1</b>	323.1	<b>211.1</b>	205.1	229.1	<b>254.9</b>	254.9	<b>479.7</b>	500.0	469.0
February-2014	<b>323.1</b>	323.1	<b>211.3</b>	205.1	229.8	<b>254.5</b>	254.5	<b>489.3</b>	500.0	483.5
March-2014	<b>323.1</b>	323.1	<b>219.8</b>	216.2	230.2	<b>254.5</b>	254.5	<b>489.3</b>	500.0	483.5
April-2014	<b>313.3</b>	313.3	<b>210.9</b>	205.1	228.1	<b>254.5</b>	254.5	<b>489.8</b>	500.0	484.4
May-2014	<b>313.3</b>	313.3	<b>212.1</b>	205.9	230.7	<b>254.5</b>	254.5	<b>505.6</b>	500.0	508.7
June-2014	<b>371.3</b>	371.3	<b>213.0</b>	205.9	234.4	<b>276.5</b>	276.5	<b>512.4</b>	500.0	519.3
July-2014	<b>p 377.1</b>	<b>p 377.1</b>	<b>p 213.0</b>	<b>p 205.9</b>	<b>p 234.4</b>	<b>p 285.7</b>	<b>p 285.7</b>	<b>p 528.1</b>	<b>p 500.0</b>	<b>p 544.1</b>

*p: provisional*





**Table 8: Manufacturing Producer Price Index (Sept 2006=100) for July 2013 - July 2014**

*contd.*

Year / Month	Manufacture of coke, refined petroleum products etc.	Manufacture of refined petroleum products	Manufacture of chemicals and chemical products	Manufacture of basic chemicals	Manufacture of other chemical products	Manufacture of man-made fibres	Manufacture of rubber and plastics products	Manufacture of rubber products	Manufacture of plastics products
<i>ISIC</i>	<i>D23</i>	<i>D232</i>	<i>D24</i>	<i>D241</i>	<i>D242</i>	<i>D243</i>	<i>D25</i>	<i>D251</i>	<i>D252</i>
<i>weight</i>	22.94	22.94	<b>10.15</b>	0.54	9.45	0.16	<b>3.90</b>	0.76	3.14
2009 average	<b>134.2</b>	134.2	<b>150.8</b>	194.6	151.1	109.6	<b>144.4</b>	190.7	135.7
2010 average	<b>160.4</b>	160.4	<b>151.2</b>	227.9	151.1	109.6	<b>154.6</b>	193.5	146.5
2011 average	<b>202.7</b>	202.7	<b>163.2</b>	245.4	163.3	109.6	<b>174.2</b>	252.9	160.2
2012 average	<b>239.0</b>	239.0	<b>183.3</b>	260.9	183.9	109.6	<b>196.9</b>	248.5	186.9
2013 average	<b>283.7</b>	283.7	<b>211.5</b>	270.1	213.1	109.6	<b>219.4</b>	238.3	215.5
July-2013	<b>281.9</b>	281.9	<b>216.3</b>	278.7	217.9	109.6	<b>215.4</b>	237.9	210.6
August-2013	<b>296.8</b>	296.8	<b>216.2</b>	275.0	217.9	109.6	<b>213.7</b>	227.7	210.6
September-2013	<b>317.1</b>	317.1	<b>216.2</b>	275.2	217.9	109.6	<b>232.4</b>	226.4	233.8
October-2013	<b>308.5</b>	308.5	<b>222.0</b>	275.5	224.0	109.6	<b>235.7</b>	231.9	236.6
November-2013	<b>308.5</b>	308.5	<b>237.7</b>	275.7	240.3	109.6	<b>236.3</b>	233.3	237.0
December-2013	<b>321.7</b>	321.7	<b>237.7</b>	276.0	240.3	109.6	<b>237.1</b>	236.4	237.2
January-2014	<b>351.5</b>	351.5	<b>246.7</b>	330.9	249.0	109.6	<b>257.9</b>	240.8	262.0
February-2014	<b>370.0</b>	370.0	<b>246.8</b>	330.9	249.1	109.6	<b>259.6</b>	246.5	262.6
March-2014	<b>393.7</b>	393.7	<b>246.8</b>	330.9	249.1	109.6	<b>267.6</b>	250.7	271.6
April-2014	<b>399.4</b>	399.4	<b>264.8</b>	330.9	267.9	109.6	<b>268.1</b>	250.0	272.3
May-2014	<b>401.2</b>	401.2	<b>266.0</b>	330.9	269.2	109.6	<b>262.2</b>	252.2	264.5
June-2014	<b>402.2</b>	402.2	<b>272.9</b>	330.9	276.3	109.6	<b>263.9</b>	259.5	264.9
July-2014	<b>p 499.9</b>	p 499.9	<b>p 273.6</b>	p 333.8	p 277.0	p 109.6	<b>p 285.6</b>	p 263.9	p 290.8

*p: provisional*

**Table 8: Manufacturing Producer Price Index (Sept 2006=100) for July 2013 - July 2014**

*contd.*

Year / Month	Manufacture of other non-metallic min. products	Manufacture of non-metallic mineral products n.e.c.	Manufacture of basic metals	Manufacture of basic iron and steel	Manufacture of basic precious and non-ferrous metals	Manufacture of fabricated metal products, ...	Manufacture of structural metal products, tanks, reservoirs ...	Manufacture of other fabricated metal products ...	Manufacture of machinery ... n.e.c.	Manufacture of special-purpose machinery
<i>ISIC</i>	<b>D26</b>	<i>D269</i>	<b>D27</b>	<i>D271</i>	<i>D272</i>	<b>D28</b>	<i>D281</i>	<i>D289</i>	<b>D29</b>	<i>D292</i>
<i>weight</i>	<b>8.20</b>	<i>8.20</i>	<b>5.02</b>	<i>2.02</i>	<i>2.65</i>	<b>3.70</b>	<i>1.55</i>	<i>2.15</i>	<b>0.42</b>	<i>0.42</i>
2009 average	<b>168.7</b>	168.7	<b>148.2</b>	178.2	128.8	<b>224.3</b>	217.4	230.4	<b>216.1</b>	216.1
2010 average	<b>177.9</b>	177.9	<b>161.0</b>	187.6	145.4	<b>262.0</b>	264.8	260.9	<b>278.3</b>	278.3
2011 average	<b>185.0</b>	185.0	<b>179.5</b>	232.4	152.2	<b>266.8</b>	268.7	265.4	<b>347.4</b>	347.4
2012 average	<b>246.6</b>	246.6	<b>205.0</b>	259.9	171.3	<b>315.4</b>	333.8	301.9	<b>384.3</b>	384.3
2013 average	<b>266.5</b>	266.5	<b>214.9</b>	266.1	182.7	<b>350.7</b>	376.1	333.4	<b>530.2</b>	530.2
July-2013	<b>267.9</b>	267.9	<b>212.6</b>	262.4	181.1	<b>353.4</b>	390.9	328.5	<b>676.2</b>	676.2
August-2013	<b>265.7</b>	265.7	<b>215.1</b>	269.4	181.2	<b>353.6</b>	390.9	328.8	<b>676.2</b>	676.2
September-2013	<b>265.7</b>	265.7	<b>215.2</b>	269.4	181.4	<b>360.1</b>	395.3	336.4	<b>676.2</b>	676.2
October-2013	<b>267.9</b>	267.9	<b>216.0</b>	269.7	182.4	<b>367.8</b>	397.1	347.8	<b>676.2</b>	676.2
November-2013	<b>269.7</b>	269.7	<b>217.8</b>	270.1	184.8	<b>368.2</b>	397.1	348.5	<b>676.2</b>	676.2
December-2013	<b>269.7</b>	269.7	<b>219.0</b>	270.5	186.4	<b>371.3</b>	397.1	353.5	<b>676.2</b>	676.2
January-2014	<b>302.8</b>	302.8	<b>232.4</b>	271.9	206.2	<b>378.9</b>	408.9	358.6	<b>676.2</b>	676.2
February-2014	<b>314.2</b>	314.2	<b>238.1</b>	280.5	210.2	<b>381.5</b>	408.9	362.9	<b>676.2</b>	676.2
March-2014	<b>314.9</b>	314.9	<b>241.1</b>	281.3	214.4	<b>384.9</b>	414.3	365.1	<b>676.2</b>	676.2
April-2014	<b>345.9</b>	345.9	<b>262.9</b>	289.8	244.1	<b>395.8</b>	414.5	382.8	<b>676.2</b>	676.2
May-2014	<b>361.3</b>	361.3	<b>268.7</b>	298.7	247.9	<b>397.4</b>	416.4	384.3	<b>676.2</b>	676.2
June-2014	<b>363.0</b>	363.0	<b>270.4</b>	298.7	250.7	<b>398.6</b>	416.4	386.3	<b>676.2</b>	676.2
July-2014	<b>p 442.5</b>	p 442.5	<b>p 279.1</b>	p 298.7	p 265.1	<b>p 416.7</b>	p 434.4	p 405.0	<b>p 676.2</b>	p 676.2

*p: provisional*

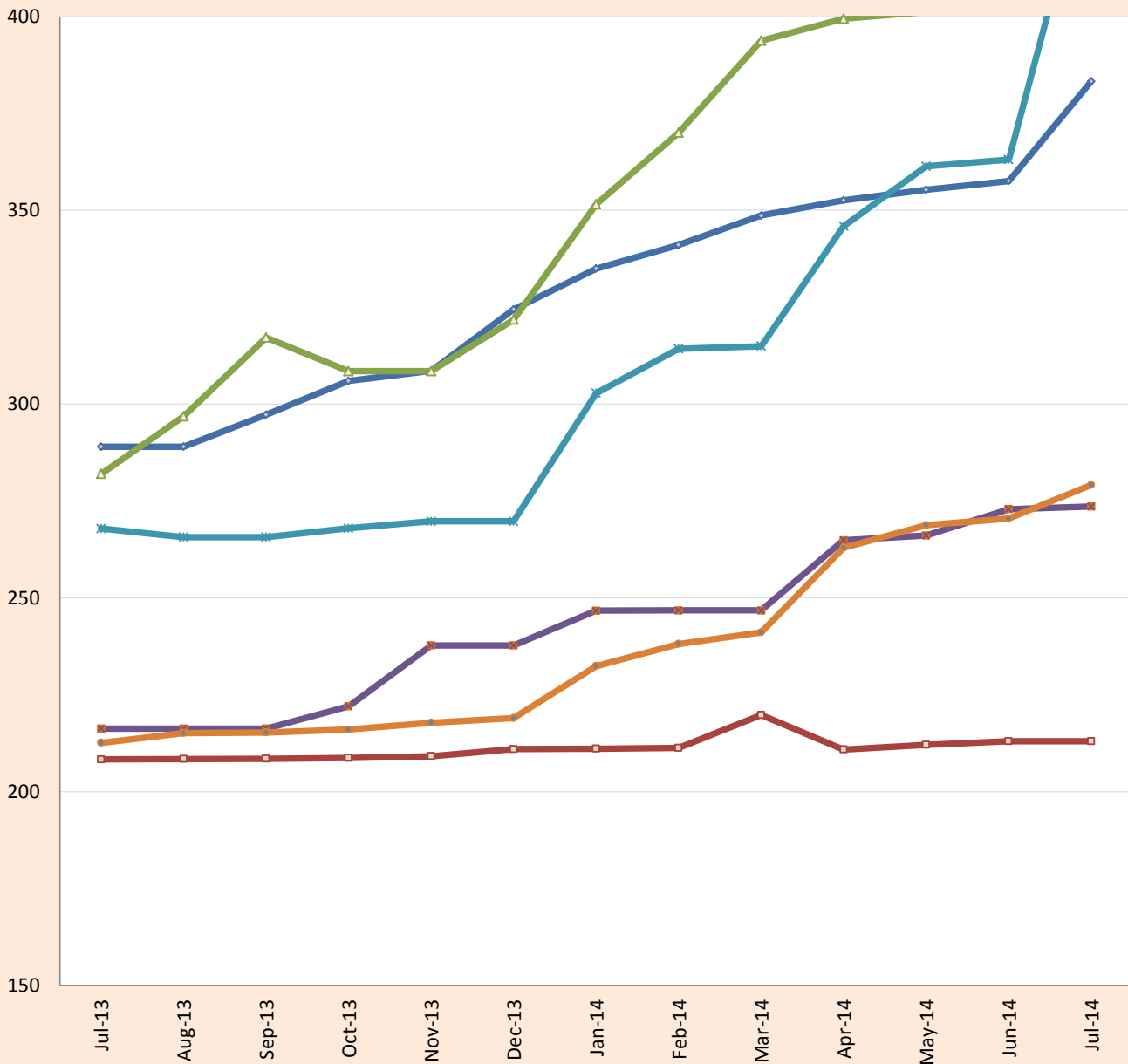
**Table 8: Manufacturing Producer Price Index (Sept 2006=100) for July 2013 - July 2014**

*contd.*

Year / Month	Manufacture of electrical machinery and apparatus n.e.c.	Manufacture of insulated wire and cable	Manufacture of motor vehicles, trailers and semi-trailers	Manufacture of bodies for motor vehicles, trailers and semi-trailers	Manufacture of furniture; manufacturing n.e.c.	Manufacture of furniture	Manufacturing n.e.c.
<i>ISIC</i>	<i>D31</i>	<i>D313</i>	<i>D34</i>	<i>D342</i>	<i>D36</i>	<i>D361</i>	<i>D369</i>
<i>weight</i>	<b>0.41</b>	<i>0.41</i>	<b>0.05</b>	<i>0.05</i>	<b>2.44</b>	<i>2.33</i>	<i>0.11</i>
2009 average	<b>115.3</b>	115.3	<b>191.5</b>	191.5	<b>167.6</b>	167.9	155.6
2010 average	<b>138.8</b>	138.8	<b>185.2</b>	185.2	<b>192.2</b>	192.5	185.7
2011 average	<b>168.8</b>	168.8	<b>213.1</b>	213.1	<b>221.0</b>	220.0	256.4
2012 average	<b>199.2</b>	199.2	<b>227.4</b>	227.4	<b>253.5</b>	252.3	293.2
2013 average	<b>200.4</b>	200.4	<b>261.2</b>	261.2	<b>321.5</b>	320.0	374.2
July-2013	<b>196.6</b>	196.6	<b>263.2</b>	263.2	<b>340.3</b>	338.6	400.1
August-2013	<b>196.6</b>	196.6	<b>265.9</b>	265.9	<b>340.4</b>	338.6	401.7
September-2013	<b>196.6</b>	196.6	<b>271.4</b>	271.4	<b>340.4</b>	338.6	401.7
October-2013	<b>196.6</b>	196.6	<b>279.5</b>	279.5	<b>345.6</b>	343.7	416.1
November-2013	<b>196.7</b>	196.7	<b>285.0</b>	285.0	<b>345.9</b>	343.9	416.1
December-2013	<b>196.7</b>	196.7	<b>295.0</b>	295.0	<b>346.1</b>	344.2	416.1
January-2014	<b>206.5</b>	206.5	<b>306.3</b>	306.3	<b>366.3</b>	364.8	417.5
February-2014	<b>206.6</b>	206.6	<b>324.2</b>	324.2	<b>366.4</b>	364.9	417.5
March-2014	<b>206.7</b>	206.7	<b>344.0</b>	344.0	<b>369.2</b>	367.8	417.5
April-2014	<b>206.7</b>	206.7	<b>344.0</b>	344.0	<b>372.6</b>	371.3	417.5
May-2014	<b>206.8</b>	206.8	<b>379.9</b>	379.9	<b>381.8</b>	380.7	417.5
June-2014	<b>206.8</b>	206.8	<b>387.6</b>	387.6	<b>400.1</b>	398.2	466.8
July-2014	<b>p 206.8</b>	p 206.8	<b>p 387.6</b>	p 387.6	<b>p 434.0</b>	p 432.6	p 480.7

*p: provisional*

**PPI for Selected Subgroups in the Manufacturing Sector**  
(Sept.2006=100)



- Manufacture of food products and beverages
- Manufacture of wood and articles of straw etc.
- Manufacture of coke, refined petroleum products etc.
- Manufacture of chemicals and chemical products
- Manufacture of other non-metallic min. products
- Manufacture of basic metals

Ghana Statistical Service (GSS)

**Table 9: Manufacturing: Yearly Change Rates for July 2013 - July 2014 (%)**

Year / Month	Manufacturing	Manufacture of food products and beverages	Production, processing, preservation of meat, fish, fruit, vegetables, oils and fats	Manufacture of dairy products	Manufacture of grain mill products, starch products, and prepared animal feeds	Manufacture of other food products	Manufacture of beverages	Manufacture of textiles	Spinning, weaving and finishing of textiles
ISIC	D	D15	D151	D152	D153	D154	D155	D17	D171
weight	100	25.64	4.60	4.31	4.66	4.80	7.27	4.27	4.28
2009 average	<b>12.7</b>	<b>21.1</b>	24.1	17.9	8.4	11.0	31.5	<b>18.0</b>	18.0
2010 average	<b>13.3</b>	<b>16.7</b>	-0.9	20.3	4.5	22.9	33.0	<b>8.4</b>	8.4
2011 average	<b>13.7</b>	<b>12.1</b>	13.4	11.6	22.9	17.7	3.8	<b>25.9</b>	25.9
2012 average	<b>18.5</b>	<b>17.1</b>	26.9	12.0	15.4	3.0	26.5	<b>39.9</b>	39.9
2013 average	<b>13.0</b>	<b>13.1</b>	11.1	15.5	4.4	23.0	14.5	<b>16.2</b>	16.2
July-2013	<b>10.9</b>	<b>11.1</b>	0.0	15.6	4.0	28.8	10.8	<b>3.8</b>	3.8
August-2013	<b>10.8</b>	<b>7.1</b>	1.0	15.6	1.6	9.8	4.6	<b>3.8</b>	3.8
September-2013	<b>13.3</b>	<b>7.9</b>	16.5	15.6	-2.6	14.2	0.3	<b>7.6</b>	7.6
October-2013	<b>13.3</b>	<b>8.7</b>	25.1	4.3	5.8	15.2	4.3	<b>7.6</b>	7.6
November-2013	<b>14.5</b>	<b>9.7</b>	31.1	3.9	5.8	19.0	4.3	<b>7.6</b>	7.6
December-2013	<b>17.4</b>	<b>15.3</b>	38.3	20.1	5.8	18.0	4.3	<b>7.4</b>	7.4
January-2014	<b>24.2</b>	<b>18.9</b>	48.0	25.2	8.2	18.1	5.9	<b>10.5</b>	10.5
February-2014	<b>27.2</b>	<b>21.1</b>	53.4	25.2	11.6	26.5	5.9	<b>10.5</b>	10.5
March-2014	<b>25.1</b>	<b>22.1</b>	59.9	22.2	16.7	30.7	4.9	<b>6.5</b>	6.5
April-2014	<b>27.4</b>	<b>22.9</b>	69.2	22.2	16.7	28.8	4.9	<b>6.5</b>	6.5
May-2014	<b>27.5</b>	<b>23.3</b>	76.1	22.2	16.7	25.0	4.9	<b>6.5</b>	6.5
June-2014	<b>27.1</b>	<b>23.8</b>	76.4	22.2	16.7	26.5	5.9	<b>6.9</b>	6.9
July-2014	<b>p 40.3</b>	<b>p 32.6</b>	p 79.8	p 22.2	p 54.8	p 39.0	p 8.3	<b>p 6.9</b>	p 6.9

*p: provisional*

**Table 9: Manufacturing Producer Price Index Yearly Change Rates for July 2013 - July 2014 (%)**

*contd.*

Year / Month	Tanning of leather; manufacture of luggage, etc	Manufacture of footwear	Manufacture of wood and of articles of straw etc.	Sawmilling and planing of wood	Manufacture of products of wood, cork, straw etc.	Manufacture of paper and paper products	Manufacture of paper and paper products	Publishing, printing and reproduction of rec. media	Publishing	Printing and service activities ...
ISIC	D19	D192	D20	D201	D202	D21	D210	D22	D221	D222
weight	0.12	0.12	9.03	4.94	4.10	0.62	0.62	1.14	0.40	0.74
2009 average	<b>35.9</b>	35.9	<b>45.1</b>	59.0	18.9	<b>10.6</b>	10.6	<b>69.2</b>	37.6	93.7
2010 average	<b>10.8</b>	10.8	<b>-5.2</b>	-13.2	15.9	<b>11.8</b>	11.8	<b>22.0</b>	34.6	14.8
2011 average	<b>1.1</b>	1.1	<b>5.8</b>	2.5	16.9	<b>28.9</b>	28.9	<b>22.2</b>	32.7	17.0
2012 average	<b>9.6</b>	9.6	<b>6.1</b>	4.9	9.0	<b>1.4</b>	1.4	<b>30.4</b>	31.6	30.4
2013 average	<b>16.3</b>	16.3	<b>1.4</b>	-1.0	8.3	<b>14.4</b>	14.4	<b>20.2</b>	24.1	18.9
July-2013	<b>18.3</b>	18.3	<b>0.2</b>	-2.0	6.3	<b>20.6</b>	20.6	<b>21.9</b>	41.7	12.3
August-2013	<b>16.8</b>	16.8	<b>0.0</b>	-2.0	5.7	<b>21.0</b>	21.0	<b>8.8</b>	2.6	12.3
September-2013	<b>11.4</b>	11.4	<b>0.0</b>	-2.0	5.6	<b>17.7</b>	17.7	<b>10.3</b>	2.6	14.7
October-2013	<b>11.4</b>	11.4	<b>1.4</b>	-0.2	5.9	<b>15.9</b>	15.9	<b>18.4</b>	-1.9	31.1
November-2013	<b>10.2</b>	10.2	<b>1.6</b>	-0.2	6.9	<b>15.8</b>	15.8	<b>15.1</b>	-1.9	25.6
December-2013	<b>13.4</b>	13.4	<b>2.5</b>	-0.2	10.6	<b>15.4</b>	15.4	<b>15.1</b>	-1.9	25.6
January-2014	<b>19.7</b>	19.7	<b>2.1</b>	-0.2	8.8	<b>25.2</b>	25.2	<b>15.5</b>	-1.9	26.3
February-2014	<b>23.7</b>	23.7	<b>2.4</b>	-0.2	10.2	<b>25.0</b>	25.0	<b>17.8</b>	-1.9	30.2
March-2014	<b>19.0</b>	19.0	<b>5.9</b>	5.1	8.3	<b>16.4</b>	16.4	<b>13.3</b>	-1.9	22.5
April-2014	<b>14.1</b>	14.1	<b>1.5</b>	-0.4	7.3	<b>13.5</b>	13.5	<b>13.4</b>	-1.9	22.7
May-2014	<b>14.6</b>	14.6	<b>2.1</b>	0.4	7.1	<b>13.5</b>	13.5	<b>17.1</b>	-1.9	28.9
June-2014	<b>33.5</b>	33.5	<b>2.3</b>	0.4	8.0	<b>14.7</b>	14.7	<b>18.7</b>	-1.9	31.6
July-2014	<b>p 35.6</b>	p 35.6	<b>p 2.2</b>	p 0.4	p 7.7	<b>p 18.5</b>	p 18.5	<b>p 21.2</b>	-p 4.4	p 37.9

*p: provisional*

**Table 9: Manufacturing: Yearly Change Rates for July 2013 - July 2014 (%)**

*contd.*

Year / Month	Manufacture of coke, refined petroleum products etc.	Manufacture of refined petroleum products	Manufacture of chemicals and chemical products	Manufacture of basic chemicals	Manufacture of other chemical products	Manufacture of man-made fibres	Manufacture of rubber and plastic products	Manufacture of rubber products	Manufacture of plastics products
ISIC	D23	D232	D24	D241	D242	D243	D25	D251	D252
weight	22.94	22.94	10.15	0.54	9.45	0.16	3.90	0.76	3.14
2009 average	-6.7	-6.7	7.5	19.9	7.4	0.0	24.1	45.1	20.3
2010 average	24.4	24.4	0.3	18.0	0.0	0.0	7.5	6.4	8.2
2011 average	26.4	26.4	8.0	7.7	8.1	0.0	12.7	31.2	9.4
2012 average	17.9	17.9	12.8	6.6	13.1	0.0	13.0	-1.6	16.7
2013 average	18.8	18.8	15.3	3.5	15.7	0.0	11.6	-3.8	15.4
July-2013	18.5	18.5	16.8	5.9	17.3	0.0	4.3	-9.8	7.8
August-2013	24.7	24.7	15.1	4.5	15.5	0.0	4.8	-7.7	7.8
September-2013	33.6	33.6	14.9	4.6	15.3	0.0	14.3	-6.5	19.7
October-2013	30.0	30.0	18.0	4.7	18.5	0.0	16.2	-2.9	21.1
November-2013	30.1	30.1	26.3	4.7	27.1	0.0	15.8	-2.1	20.4
December-2013	35.7	35.7	26.3	4.9	27.1	0.0	16.2	-1.1	20.5
January-2014	48.3	48.3	31.0	25.7	31.7	0.0	25.8	-2.0	33.1
February-2014	56.1	56.1	31.4	25.7	32.1	0.0	26.3	-0.6	33.4
March-2014	44.7	44.7	31.7	25.0	32.4	0.0	29.3	0.1	37.1
April-2014	47.2	47.2	35.2	25.0	36.0	0.0	24.3	0.0	30.6
May-2014	48.2	48.2	23.1	25.0	23.5	0.0	22.7	6.9	26.6
June-2014	42.7	42.7	26.3	25.0	26.8	0.0	22.7	10.1	25.8
July-2014	p 77.3	p 77.3	p 26.5	p 19.8	p 27.1	p 0.0	p 32.6	p 10.9	p 38.1

*p: provisional*



**Table 9: Manufacturing: Yearly Change Rates for July 2013 - July 2014 (%)**

*contd.*

Year / Month	Manufacture of other non-metallic min. products	Manufacture of non-metallic mineral products n.e.c.	Manufacture of basic metals	Manufacture of basic iron and steel	Manufacture of basic precious and non-ferrous metals	Manufacture of fabricated metal products, ...	Manufacture of structural metal products, tanks, reservoirs ...	Manufacture of other fabricated metal products ...	Manufacture of machinery ... n.e.c.	Manufacture of special-purpose machinery
ISIC	D26	D269	D27	D271	D272	D28	D281	D289	D29	D292
weight	8.20	8.20	5.02	2.02	2.65	3.70	1.55	2.15	0.42	0.42
2009 average	<b>29.8</b>	29.8	<b>9.0</b>	5.6	11.3	<b>20.4</b>	21.4	19.6	<b>37.8</b>	37.8
2010 average	<b>6.0</b>	6.0	<b>8.7</b>	5.4	12.9	<b>17.5</b>	23.0	13.6	<b>30.6</b>	30.6
2011 average	<b>4.0</b>	4.0	<b>11.6</b>	24.8	4.9	<b>2.0</b>	2.0	1.8	<b>24.8</b>	24.8
2012 average	<b>33.2</b>	33.2	<b>14.2</b>	12.1	12.5	<b>18.2</b>	24.2	13.7	<b>14.1</b>	14.1
2013 average	<b>9.0</b>	9.0	<b>5.0</b>	2.4	7.1	<b>11.4</b>	12.8	10.7	<b>38.0</b>	38.0
July-2013	<b>1.4</b>	1.4	<b>1.5</b>	0.9	1.9	<b>10.3</b>	14.7	7.7	<b>76.0</b>	76.0
August-2013	<b>0.6</b>	0.6	<b>2.6</b>	3.6	1.9	<b>9.8</b>	13.7	7.6	<b>76.0</b>	76.0
September-2013	<b>0.6</b>	0.6	<b>2.6</b>	3.6	1.9	<b>10.6</b>	15.0	7.6	<b>76.0</b>	76.0
October-2013	<b>1.7</b>	1.7	<b>0.8</b>	3.7	-1.3	<b>8.7</b>	11.4	6.8	<b>76.0</b>	76.0
November-2013	<b>2.3</b>	2.3	<b>1.8</b>	3.9	0.2	<b>8.9</b>	11.4	7.1	<b>76.0</b>	76.0
December-2013	<b>2.3</b>	2.3	<b>2.3</b>	4.0	1.0	<b>10.1</b>	11.9	8.7	<b>76.0</b>	76.0
January-2014	<b>14.9</b>	14.9	<b>8.5</b>	4.5	11.7	<b>12.0</b>	15.3	9.8	<b>76.0</b>	76.0
February-2014	<b>19.3</b>	19.3	<b>11.2</b>	7.8	13.8	<b>12.8</b>	15.4	11.0	<b>76.0</b>	76.0
March-2014	<b>19.4</b>	19.4	<b>13.1</b>	6.1	18.8	<b>14.6</b>	16.9	13.0	<b>76.0</b>	76.0
April-2014	<b>29.7</b>	29.7	<b>23.2</b>	9.3	34.9	<b>16.1</b>	14.6	17.2	<b>76.0</b>	76.0
May-2014	<b>35.4</b>	35.4	<b>25.7</b>	12.6	36.6	<b>16.8</b>	15.6	17.7	<b>76.0</b>	76.0
June-2014	<b>36.0</b>	36.0	<b>26.1</b>	12.6	37.6	<b>17.0</b>	15.8	18.0	<b>76.0</b>	76.0
July-2014	<b>p 65.2</b>	p 65.2	<b>p 31.3</b>	p 13.8	p 46.4	<b>p 17.9</b>	p 11.1	p 23.3	<b>p 0.0</b>	p 0.0

*p: provisional*

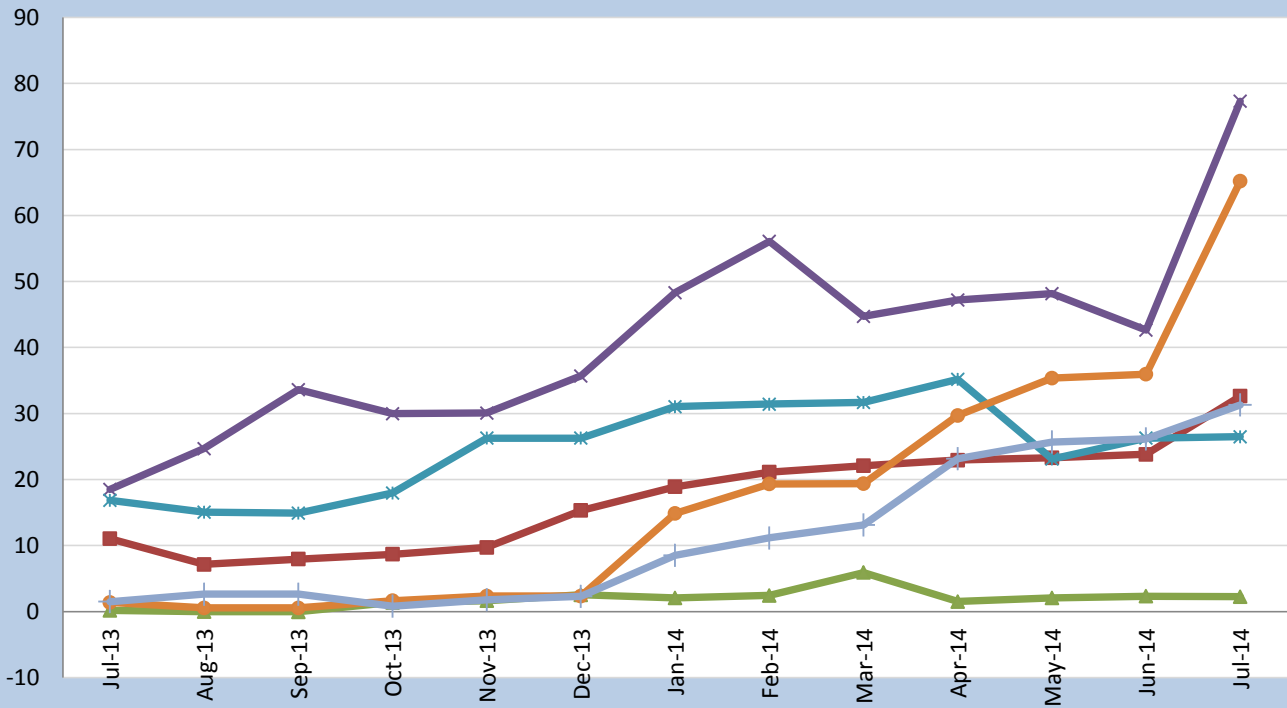
**Table 9: Manufacturing: Yearly Change Rates for July 2013 - July 2014 (%)**

*contd.*

Year / Month	Manufacture of electrical machinery and apparatus n.e.c.	Manufacture of insulated wire and cable	Manufacture of motor vehicles, trailers and semi-trailers	Manufacture of bodies for motor vehicles, trailers and semi-trailers	Manufacture of furniture; manufacturing n.e.c.	Manufacture of furniture	Manufacturing n.e.c.
<i>ISIC</i>	<i>D31</i>	<i>D313</i>	<i>D34</i>	<i>D342</i>	<i>D36</i>	<i>D361</i>	<i>D369</i>
<i>weight</i>	<b>0.41</b>	0.41	<b>0.05</b>	0.05	<b>2.44</b>	2.33	0.11
2009 average	<b>5.5</b>	5.5	<b>25.9</b>	25.9	<b>11.3</b>	11.4	8.7
2010 average	<b>20.2</b>	20.2	<b>-2.5</b>	-2.5	<b>15.0</b>	14.9	19.3
2011 average	<b>22.7</b>	22.7	<b>15.6</b>	15.6	<b>14.9</b>	14.3	38.0
2012 average	<b>18.1</b>	18.1	<b>6.8</b>	6.8	<b>14.8</b>	14.8	14.8
2013 average	<b>1.0</b>	1.0	<b>14.8</b>	14.8	<b>26.6</b>	26.6	27.4
July-2013	<b>-5.6</b>	-5.6	<b>14.3</b>	14.3	<b>32.2</b>	32.1	35.7
August-2013	<b>-5.6</b>	-5.6	<b>15.8</b>	15.8	<b>31.5</b>	31.4	35.9
September-2013	<b>-5.6</b>	-5.6	<b>15.3</b>	15.3	<b>29.3</b>	29.1	35.9
October-2013	<b>-5.6</b>	-5.6	<b>17.9</b>	17.9	<b>31.5</b>	31.2	40.8
November-2013	<b>-5.5</b>	-5.5	<b>22.2</b>	22.2	<b>31.6</b>	31.3	40.8
December-2013	<b>-5.5</b>	-5.5	<b>26.6</b>	26.6	<b>29.6</b>	29.4	38.8
January-2014	<b>-0.8</b>	-0.8	<b>25.9</b>	25.9	<b>37.1</b>	37.0	39.3
February-2014	<b>-0.8</b>	-0.8	<b>31.9</b>	31.9	<b>36.9</b>	36.8	37.8
March-2014	<b>-0.8</b>	-0.8	<b>42.4</b>	42.4	<b>20.0</b>	19.5	38.0
April-2014	<b>-0.7</b>	-0.7	<b>41.5</b>	41.5	<b>18.6</b>	18.4	24.9
May-2014	<b>5.7</b>	5.7	<b>53.9</b>	53.9	<b>18.9</b>	19.4	4.8
June-2014	<b>5.7</b>	5.7	<b>52.7</b>	52.7	<b>24.5</b>	24.8	16.7
July-2014	<b>p 5.2</b>	p 5.2	<b>p 47.3</b>	p 47.3	<b>p 27.5</b>	p 27.7	p 20.1

*p: provisional*

## PPI Inflation for selected subgroups in the Manufacturing Sector (Year-on-year change rates in %)



- Manufacture of food products and beverages
- ▲ Manufacture of wood and of articles of straw etc.
- ✕ Manufacture of coke, refined petroleum products etc.
- ✕ Manufacture of chemicals and chemical products
- Manufacture of other non-metallic min. products
- + Manufacture of basic metals

*Ghana Statistical Service (GSS)*

**Table 10: Manufacturing: Monthly Change Rates for July 2013 - July 2014 (%)**

Year / Month	Manufacturing	Manufacture of food products and beverages	Production, processing, preservation of meat, fish, fruit, vegetables, oils and fats	Manufacture of dairy products	Manufacture of grain mill products, starch products, and prepared animal feeds	Manufacture of other food products	Manufacture of beverages	Manufacture of textiles	Spinning, weaving and finishing of textiles
ISIC	D	D15	D151	D152	D153	D154	D155	D17	D171
weight	100	25.64	4.60	4.31	4.66	4.80	7.27	4.27	4.28
2009 average	<b>2.1</b>	<b>1.7</b>	1.7	2.6	-0.8	1.3	2.3	<b>1.6</b>	1.6
2010 average	<b>0.4</b>	<b>0.8</b>	-0.1	0.7	0.6	1.9	1.6	<b>1.0</b>	1.0
2011 average	<b>1.2</b>	<b>1.1</b>	1.5	0.8	2.3	-0.8	1.5	<b>1.9</b>	1.9
2012 average	<b>1.5</b>	<b>1.5</b>	0.9	1.5	1.0	2.3	2.0	<b>3.0</b>	3.0
2013 average	<b>1.3</b>	<b>1.2</b>	2.8	1.6	0.5	1.4	0.4	<b>0.6</b>	0.6
July-2013	<b>0.4</b>	<b>0.1</b>	0.7	0.0	0.0	-0.9	0.2	<b>0.0</b>	0.0
August-2013	<b>1.1</b>	<b>0.0</b>	-0.8	0.0	0.0	1.1	0.0	<b>0.0</b>	0.0
September-2013	<b>2.9</b>	<b>2.9</b>	16.5	0.0	0.0	4.6	0.0	<b>3.7</b>	3.7
October-2013	<b>0.8</b>	<b>2.9</b>	2.4	0.0	8.6	0.1	4.1	<b>0.0</b>	0.0
November-2013	<b>1.1</b>	<b>0.8</b>	3.6	0.0	0.0	2.7	0.0	<b>0.0</b>	0.0
December-2013	<b>2.5</b>	<b>5.1</b>	3.9	15.6	0.0	1.6	0.0	<b>-0.2</b>	-0.2
January-2014	<b>5.9</b>	<b>3.2</b>	7.9	4.3	2.3	0.0	1.5	<b>2.9</b>	2.9
February-2014	<b>2.4</b>	<b>1.8</b>	5.8	0.0	2.2	5.3	0.0	<b>0.0</b>	0.0
March-2014	<b>2.6</b>	<b>2.2</b>	6.7	1.4	2.8	3.1	0.0	<b>0.0</b>	0.0
April-2014	<b>2.8</b>	<b>1.1</b>	5.4	0.0	0.0	3.0	0.0	<b>0.0</b>	0.0
May-2014	<b>1.1</b>	<b>0.8</b>	4.9	0.0	0.0	0.3	0.0	<b>0.0</b>	0.0
June-2014	<b>0.8</b>	<b>0.6</b>	2.0	0.0	0.0	3.0	0.0	<b>0.4</b>	0.4
July-2014	<b>p 10.8</b>	<b>p 7.2</b>	p 2.7	p 0.0	p 32.7	p 8.9	p 2.5	<b>p 0.0</b>	p 0.0

*p: provisional*

**Table 10: Manufacturing: Monthly Change Rates for July 2013 - July 2014 (%)**

*contd.*

Year / Month	Tanning of leather; manu facture of luggage, etc	Manufacture of footwear	Manufacture of wood an of articles of straw etc.	Sawmilling and planing of wood	Manufacture of products of wood, cork, straw etc.	Manufacture of paper and paper products	Manufacture of paper and paper products	Publishing, printing and reproduction of rec. media	Publishing	Printing and service activities ...
ISIC	D19	D192	D20	D201	D202	D21	D210	D22	D221	D222
weight	0.12	0.12	9.03	4.94	4.10	0.62	0.62	1.14	0.40	0.74
2009 average	<b>0.2</b>	0.2	<b>-0.9</b>	-0.7	2.2	<b>0.1</b>	0.1	<b>7.4</b>	3.8	10.1
2010 average	<b>1.1</b>	1.1	<b>-0.1</b>	-0.8	0.8	<b>1.7</b>	1.7	<b>-0.5</b>	0.0	-0.9
2011 average	<b>0.5</b>	0.5	<b>0.6</b>	0.3	1.4	<b>1.5</b>	1.5	<b>2.1</b>	3.0	1.7
2012 average	<b>1.1</b>	1.1	<b>0.4</b>	0.3	0.5	<b>0.2</b>	0.2	<b>2.7</b>	4.1	2.2
2013 average	<b>1.1</b>	1.1	<b>0.2</b>	0.0	0.8	<b>1.2</b>	1.2	<b>1.2</b>	-0.1	2.0
July-2013	<b>0.0</b>	0.0	<b>0.1</b>	0.0	0.3	<b>0.0</b>	0.0	<b>0.9</b>	2.6	0.0
August-2013	<b>0.0</b>	0.0	<b>0.1</b>	0.0	0.2	<b>0.0</b>	0.0	<b>0.0</b>	0.0	0.0
September-2013	<b>2.6</b>	2.6	<b>0.0</b>	0.0	0.1	<b>-2.7</b>	-2.7	<b>2.2</b>	0.0	3.4
October-2013	<b>0.0</b>	0.0	<b>0.1</b>	0.0	0.3	<b>0.0</b>	0.0	<b>7.3</b>	-4.4	14.3
November-2013	<b>2.9</b>	2.9	<b>0.2</b>	0.0	0.9	<b>0.1</b>	0.1	<b>0.0</b>	0.0	0.0
December-2013	<b>2.9</b>	2.9	<b>0.9</b>	0.0	3.4	<b>0.1</b>	0.1	<b>0.0</b>	0.0	0.0
January-2014	<b>6.9</b>	6.9	<b>0.1</b>	0.0	0.2	<b>8.5</b>	8.5	<b>0.4</b>	0.0	0.6
February-2014	<b>0.0</b>	0.0	<b>0.1</b>	0.0	0.3	<b>-0.1</b>	-0.1	<b>2.0</b>	0.0	3.1
March-2014	<b>0.0</b>	0.0	<b>4.0</b>	5.4	0.2	<b>0.0</b>	0.0	<b>0.0</b>	0.0	0.0
April-2014	<b>-3.0</b>	-3.0	<b>-4.0</b>	-5.1	-0.9	<b>0.0</b>	0.0	<b>0.1</b>	0.0	0.2
May-2014	<b>0.0</b>	0.0	<b>0.6</b>	0.4	1.1	<b>0.0</b>	0.0	<b>3.2</b>	0.0	5.0
June-2014	<b>18.5</b>	18.5	<b>0.4</b>	0.0	1.6	<b>8.6</b>	8.6	<b>1.3</b>	0.0	2.1
July-2014	<b>p 1.6</b>	p 1.6	<b>p 0.0</b>	p 0.0	p 0.0	<b>p 3.3</b>	p 3.3	<b>p 3.1</b>	p 0.0	p 4.8

*p: provisional*

**Table 10: Manufacturing: Monthly Change Rates for July 2013 - July 2014 (%)**

*contd.*

Year / Month	Manufacture of coke, refined petroleum products etc.	Manufacture of refined petroleum products	Manufacture of chemicals and chemical products	Manufacture of basic chemicals	Manufacture of other chemical products	Manufacture of man-made fibres	Manufacture of rubber and plastics products	Manufacture of rubber products	Manufacture of plastics products
ISIC	D23	D232	D24	D241	D242	D243	D25	D251	D252
weight	22.94	22.94	10.15	0.54	9.45	0.16	3.90	0.76	3.14
2009 average	<b>4.6</b>	4.6	<b>0.2</b>	2.7	0.2	0.0	<b>2.5</b>	10.3	1.4
2010 average	<b>0.0</b>	0.0	<b>-0.1</b>	0.0	-0.1	0.0	<b>0.2</b>	-0.3	0.5
2011 average	<b>2.1</b>	2.1	<b>1.1</b>	1.0	1.1	0.0	<b>1.0</b>	0.9	1.1
2012 average	<b>1.4</b>	1.4	<b>1.1</b>	0.3	1.1	0.0	<b>1.1</b>	0.1	1.4
2013 average	<b>2.7</b>	2.7	<b>2.0</b>	0.4	2.1	0.0	<b>1.3</b>	-0.1	1.6
July-2013	<b>0.0</b>	0.0	<b>0.1</b>	5.3	0.0	0.0	<b>0.2</b>	0.9	0.0
August-2013	<b>5.3</b>	5.3	<b>0.0</b>	-1.3	0.0	0.0	<b>-0.8</b>	-4.3	0.0
September-2013	<b>6.9</b>	6.9	<b>0.0</b>	0.1	0.0	0.0	<b>8.8</b>	-0.6	11.0
October-2013	<b>-2.7</b>	-2.7	<b>2.7</b>	0.1	2.8	0.0	<b>1.4</b>	2.4	1.2
November-2013	<b>0.0</b>	0.0	<b>7.1</b>	0.1	7.3	0.0	<b>0.2</b>	0.6	0.2
December-2013	<b>4.3</b>	4.3	<b>0.0</b>	0.1	0.0	0.0	<b>0.3</b>	1.4	0.1
January-2014	<b>9.3</b>	9.3	<b>3.8</b>	19.9	3.6	0.0	<b>8.8</b>	1.9	10.4
February-2014	<b>5.2</b>	5.2	<b>0.0</b>	0.0	0.0	0.0	<b>0.6</b>	2.4	0.2
March-2014	<b>6.4</b>	6.4	<b>0.0</b>	0.0	0.0	0.0	<b>3.1</b>	1.7	3.4
April-2014	<b>1.4</b>	1.4	<b>7.3</b>	0.0	7.6	0.0	<b>0.2</b>	-0.3	0.3
May-2014	<b>0.4</b>	0.4	<b>0.5</b>	0.0	0.5	0.0	<b>-2.2</b>	0.9	-2.9
June-2014	<b>0.3</b>	0.3	<b>2.6</b>	0.0	2.6	0.0	<b>0.6</b>	2.9	0.1
July-2014	<b>p 24.3</b>	p 24.3	<b>p 0.2</b>	p 0.9	p 0.2	p 0.0	<b>p 8.2</b>	p 1.7	p 9.8

*p: provisional*

**Table 10: Manufacturing: Monthly Change Rates for July 2013 - July 2014 (%)**
*contd.*

Year / Month	Manufacture of other non-metallic min. products	Manufacture of non-metallic mineral products n.e.c.	Manufacture of basic metals	Manufacture of basic iron and steel	Manufacture of basic precious and non-ferrous metals	Manufacture of fabricated metal products, ...	Manufacture of structural metal products, tanks, reservoirs ...	Manufacture of other fabricated metal products ...	Manufacture of machinery ... n.e.c.	Manufacture of special-purpose machinery
ISIC	D26	D269	D27	D271	D272	D28	D281	D289	D29	D292
weight	8.20	8.20	5.02	2.02	2.65	3.70	1.55	2.15	0.42	0.42
2009 average	<b>2.1</b>	2.1	<b>-0.2</b>	-0.6	0.1	<b>2.0</b>	2.7	1.4	<b>3.8</b>	3.8
2010 average	<b>0.1</b>	0.1	<b>1.5</b>	3.1	1.7	<b>0.0</b>	-0.1	0.1	<b>0.0</b>	0.0
2011 average	<b>0.7</b>	0.7	<b>0.5</b>	-0.2	0.2	<b>0.8</b>	1.5	0.4	<b>3.2</b>	3.2
2012 average	<b>2.7</b>	2.7	<b>1.3</b>	1.1	1.6	<b>1.7</b>	1.7	1.7	<b>0.0</b>	0.0
2013 average	<b>0.2</b>	0.2	<b>0.2</b>	0.3	0.1	<b>0.8</b>	1.0	0.7	<b>6.3</b>	6.3
July-2013	<b>0.3</b>	0.3	<b>-0.8</b>	-1.1	-0.6	<b>3.8</b>	8.7	0.3	<b>76.0</b>	76.0
August-2013	<b>-0.8</b>	-0.8	<b>1.2</b>	2.6	0.1	<b>0.1</b>	0.0	0.1	<b>0.0</b>	0.0
September-2013	<b>0.0</b>	0.0	<b>0.1</b>	0.0	0.1	<b>1.8</b>	1.1	2.3	<b>0.0</b>	0.0
October-2013	<b>0.8</b>	0.8	<b>0.4</b>	0.1	0.6	<b>2.1</b>	0.5	3.4	<b>0.0</b>	0.0
November-2013	<b>0.7</b>	0.7	<b>0.8</b>	0.2	1.3	<b>0.1</b>	0.0	0.2	<b>0.0</b>	0.0
December-2013	<b>0.0</b>	0.0	<b>0.5</b>	0.1	0.9	<b>0.8</b>	0.0	1.4	<b>0.0</b>	0.0
January-2014	<b>12.3</b>	12.3	<b>6.1</b>	0.5	10.6	<b>2.0</b>	3.0	1.4	<b>0.0</b>	0.0
February-2014	<b>3.8</b>	3.8	<b>2.5</b>	3.1	1.9	<b>0.7</b>	0.0	1.2	<b>0.0</b>	0.0
March-2014	<b>0.2</b>	0.2	<b>1.3</b>	0.3	2.0	<b>0.9</b>	1.3	0.6	<b>0.0</b>	0.0
April-2014	<b>9.8</b>	9.8	<b>9.0</b>	3.0	13.9	<b>2.8</b>	0.1	4.9	<b>0.0</b>	0.0
May-2014	<b>4.5</b>	4.5	<b>2.2</b>	3.1	1.6	<b>0.4</b>	0.5	0.4	<b>0.0</b>	0.0
June-2014	<b>0.5</b>	0.5	<b>0.6</b>	0.0	1.1	<b>0.3</b>	0.0	0.5	<b>0.0</b>	0.0
July-2014	<b>p 21.9</b>	p 21.9	<b>p 3.2</b>	p 0.0	p 5.7	<b>p 4.5</b>	p 4.3	p 4.8	<b>p 0.0</b>	p 0.0

*p: provisional*

**Table 10: Manufacturing: Monthly Change Rates for July 2013 - July 2014 (%)**

*contd.*

Year / Month	Manufacture of electrical machinery and apparatus n.e.c.	Manufacture of insulated wire and cable	Manufacture of motor vehicles, trailers and semi-trailers	Manufacture of bodies for motor vehicles, trailers and semi-trailers	Manufacture of furniture; manufacturing n.e.c.	Manufacture of furniture	Manufacturing n.e.c.
ISIC	D31	D313	D34	D342	D36	D361	D369
weight	0.41	0.41	0.05	0.05	2.44	2.33	0.11
2009 average	0.6	0.6	2.1	2.1	1.3	1.4	0.2
2010 average	2.0	2.0	0.1	0.1	0.2	0.2	1.7
2011 average	2.3	2.3	0.2	0.2	2.0	1.9	3.4
2012 average	0.9	0.9	1.0	1.0	1.0	1.0	0.8
2013 average	-0.5	-0.5	2.0	2.0	2.3	2.3	2.9
July-2013	0.5	0.5	3.7	3.7	5.9	6.1	0.0
August-2013	0.0	0.0	1.0	1.0	0.0	0.0	0.4
September-2013	0.0	0.0	2.1	2.1	0.0	0.0	0.0
October-2013	0.0	0.0	3.0	3.0	1.5	1.5	3.6
November-2013	0.0	0.0	2.0	2.0	0.1	0.1	0.0
December-2013	0.0	0.0	3.5	3.5	0.1	0.1	0.0
January-2014	5.0	5.0	3.8	3.8	5.8	6.0	0.4
February-2014	0.0	0.0	5.8	5.8	0.0	0.0	0.0
March-2014	0.0	0.0	6.1	6.1	0.8	0.8	0.0
April-2014	0.0	0.0	0.0	0.0	0.9	0.9	0.0
May-2014	0.0	0.0	10.4	10.4	2.5	2.5	0.0
June-2014	0.0	0.0	2.0	2.0	4.8	4.6	11.8
July-2014	p 0.0	p 0.0	p 0.0	p 0.0	p 8.5	p 8.6	p 3.0

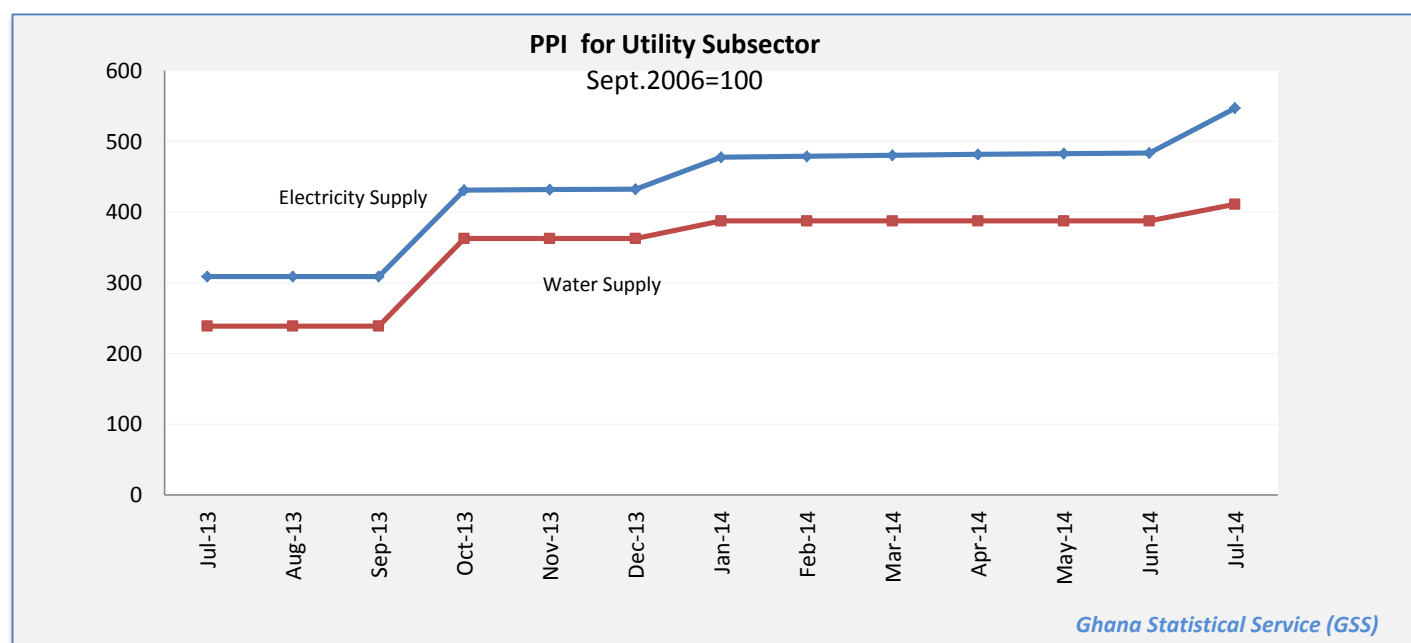
*p: provisional*



**Table 11: Utilities: Producer Price Index (Sept 2006=100) for July 2013 - July 2014**

Year / Month	Electricity and water supply (Utilities)	Electricity supply	Production, transmission and distribution of electricity	Water supply	Collection, purification and distribution of water
<i>ISIC</i>	<i>E</i>	<i>E40</i>	<i>E401</i>	<i>E41</i>	<i>E410</i>
<i>weight</i>	<b>100.00</b>	<b>93.25</b>	93.25	<b>6.75</b>	6.75
2009 average	<b>159.4</b>	<b>157.2</b>	157.2	<b>193.0</b>	193.0
2010 average	<b>226.0</b>	<b>227.6</b>	227.6	<b>208.6</b>	208.6
2011 average	<b>281.3</b>	<b>285.8</b>	285.8	<b>225.1</b>	225.1
2012 average	<b>301.8</b>	<b>306.8</b>	306.8	<b>238.6</b>	238.6
2013 average	<b>362.8</b>	<b>371.1</b>	371.1	<b>254.6</b>	254.6
July-2013	<b>303.7</b>	<b>308.9</b>	308.9	<b>238.6</b>	238.6
August-2013	<b>303.7</b>	<b>308.9</b>	308.9	<b>238.6</b>	238.6
September-2013	<b>303.8</b>	<b>309.0</b>	309.0	<b>238.6</b>	238.6
October-2013	<b>426.1</b>	<b>430.9</b>	430.9	<b>362.7</b>	362.7
November-2013	<b>426.8</b>	<b>431.7</b>	431.7	<b>362.7</b>	362.7
December-2013	<b>427.3</b>	<b>432.3</b>	432.3	<b>362.7</b>	362.7
January-2014	<b>470.9</b>	<b>477.4</b>	477.4	<b>387.3</b>	361.0
February-2014	<b>472.1</b>	<b>478.7</b>	478.7	<b>387.3</b>	360.1
March-2014	<b>473.4</b>	<b>480.1</b>	480.1	<b>387.3</b>	387.3
April-2014	<b>474.8</b>	<b>481.6</b>	481.6	<b>387.3</b>	387.3
May-2014	<b>475.8</b>	<b>482.7</b>	482.7	<b>387.3</b>	387.3
June-2014	<b>476.5</b>	<b>483.5</b>	483.5	<b>387.3</b>	387.3
July-2014	<b>p 536.8</b>	<b>p 547.0</b>	p 547.0	<b>p 411.0</b>	p 411.0

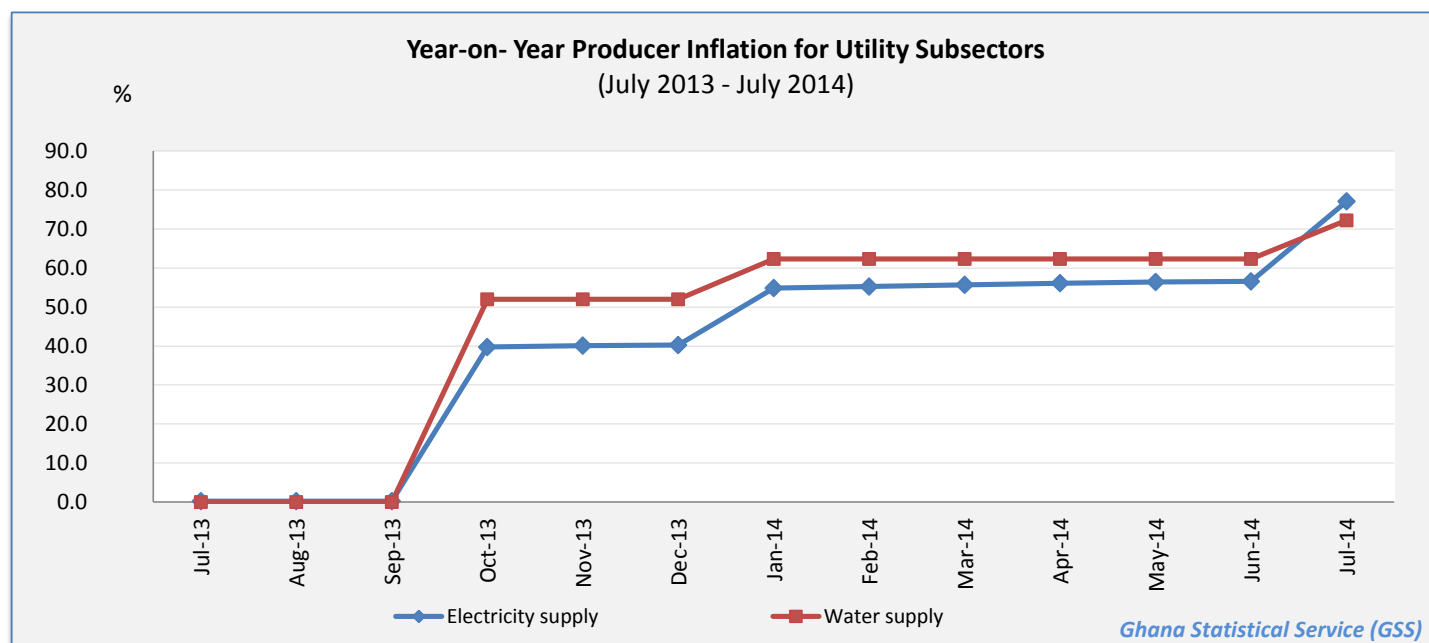
*p: provisional*



**Table 12: Utilities: Yearly Change Rates for July 2013 - July 2014 (%)**

Year / Month	Electricity and water supply (Utilities)	Electricity supply	Production, transmission and distribution of electricity	Water supply	Collection, purification and distribution of water
<i>ISIC</i>	<i>E</i>	<i>E40</i>	<i>E401</i>	<i>E41</i>	<i>E410</i>
<i>weight</i>	<b>100.00</b>	<b>93.25</b>	93.25	<b>6.75</b>	6.75
2009 average	<b>1.4</b>	<b>1.6</b>	1.6	<b>0.0</b>	0.0
2010 average	<b>41.7</b>	<b>44.7</b>	44.7	<b>8.1</b>	8.1
2011 average	<b>32.7</b>	<b>34.8</b>	34.8	<b>8.2</b>	8.2
2012 average	<b>7.4</b>	<b>7.5</b>	7.5	<b>6.1</b>	6.1
2013 average	<b>1.1</b>	<b>1.1</b>	1.1	<b>0.0</b>	0.0
July-2013	<b>0.2</b>	<b>0.2</b>	0.2	<b>0.0</b>	0.0
August-2013	<b>0.2</b>	<b>0.2</b>	0.2	<b>0.0</b>	0.0
September-2013	<b>0.2</b>	<b>0.2</b>	0.2	<b>0.0</b>	0.0
October-2013	<b>40.5</b>	<b>39.7</b>	39.7	<b>52.0</b>	52.0
November-2013	<b>40.8</b>	<b>40.1</b>	40.1	<b>52.0</b>	52.0
December-2013	<b>41.0</b>	<b>40.2</b>	40.2	<b>52.0</b>	52.0
January-2014	<b>55.3</b>	<b>54.8</b>	54.8	<b>62.3</b>	51.3
February-2014	<b>55.7</b>	<b>55.3</b>	55.3	<b>62.3</b>	50.9
March-2014	<b>56.1</b>	<b>55.7</b>	55.7	<b>62.3</b>	62.3
April-2014	<b>56.5</b>	<b>56.1</b>	56.1	<b>62.3</b>	62.3
May-2014	<b>56.8</b>	<b>56.4</b>	56.4	<b>62.3</b>	62.3
June-2014	<b>56.9</b>	<b>56.6</b>	56.6	<b>62.3</b>	62.3
July-2014	<b>p 76.8</b>	<b>p 77.1</b>	p 77.1	<b>p 72.2</b>	p 72.2

*p: provisional*



**Table 13: Utilities: Monthly Change Rates for July 2013 - July 2014 (%)**

Year / Month	Electricity and water supply (Utilities)	Electricity supply	Production, transmission and distribution of electricity	Water supply	Collection, purification and distribution of water
<i>ISIC</i>	<i>E</i>	<i>E40</i>	<i>E401</i>	<i>E41</i>	<i>E410</i>
<i>weight</i>	<b>100.00</b>	<b>93.25</b>	<b>93.25</b>	<b>6.75</b>	<b>6.75</b>
2009 average	<b>0.1</b>	<b>0.1</b>	0.1	<b>0.0</b>	0.0
2010 average	<b>6.0</b>	<b>6.4</b>	6.4	<b>1.2</b>	1.2
2011 average	<b>0.7</b>	<b>0.8</b>	0.8	<b>0.7</b>	0.7
2012 average	<b>0.1</b>	<b>0.1</b>	0.1	<b>0.0</b>	0.0
2013 average	<b>0.0</b>	<b>0.0</b>	0.0	<b>0.0</b>	0.0
July-2013	<b>0.0</b>	<b>0.0</b>	0.0	<b>0.0</b>	0.0
August-2013	<b>0.0</b>	<b>0.0</b>	0.0	<b>0.0</b>	0.0
September-2013	<b>0.0</b>	<b>0.0</b>	0.0	<b>0.0</b>	0.0
October-2013	<b>40.3</b>	<b>39.5</b>	39.5	<b>52.0</b>	52.0
November-2013	<b>0.2</b>	<b>0.2</b>	0.2	<b>0.0</b>	0.0
December-2013	<b>0.1</b>	<b>0.1</b>	0.1	<b>0.0</b>	0.0
January-2014	<b>10.2</b>	<b>10.4</b>	10.4	<b>6.8</b>	-0.5
February-2014	<b>0.3</b>	<b>0.3</b>	0.3	<b>0.0</b>	-0.2
March-2014	<b>0.3</b>	<b>0.3</b>	0.3	<b>0.0</b>	7.6
April-2014	<b>0.3</b>	<b>0.3</b>	0.3	<b>0.0</b>	0.0
May-2014	<b>0.2</b>	<b>0.2</b>	0.2	<b>0.0</b>	0.0
June-2014	<b>0.2</b>	<b>0.2</b>	0.2	<b>0.0</b>	0.0
July-2014	<b>p 12.6</b>	<b>p 13.1</b>	<b>p 13.1</b>	<b>p 6.1</b>	<b>p 6.1</b>

*p: provisional*

